

# LAZZARÒ

HOSPITALITY 2023







# CONTENTS

---

- 05. The Best With Lazzaro
- 06. Why Lazzaro
- 10. Joining Team Green
- 13. Brands That Trust Us
- 14. The Lazzaro Promise
- 16. Our Commitment
- 18. Hospitality Testing Standards
- 20. Contemporary Designs by International Designers
- 24. Tableware
- 72. Decorative Tableware
- 82. Maximalist by Angela Hull
- 90. Teaware
- 106. Accessories
- 118. Customisation
- 122. Designed To Last

Lazaro is a delicate  
alchemic equilibrium  
between design, technique,  
and elegance consistently  
maintained to deliver you  
refined contemporary  
AWARD-WINNING DESIGNS.





## THE BEST WITH LAZZARÒ

With a focus on contemporary design, working with some of the best designers across the world, we have taken the age old artform of traditional bone china manufacturing, employed innovative techniques and maintained state of the art standards to create the finest bone china objects.

At Lazzaro being the best is about our attitude towards quality and excellence, which are embodied in our iterative design and production mindset and processes.

We ensure that the highest technical skills from our artisans so that Lazzaro Fine Bone China's beguiling translucent shimmer, delicate pure white and our proprietary glaze culminate a true object of beauty capable of weathering the requirements of everyday professional and home use unscathed. The best also means that we use the finest materials to deliver you unrivalled bone china products, that are appreciated in the finest homes and top kitchens around the globe.

# PROFESSIONAL KITCHENS





# THE REAL DEAL

---

Knowing how to discern quality and authenticity can sometimes feel like it is another challenge requiring an experienced and trustworthy navigator to guide you safely through. There are multitude of bone china imposters; pretenders that try to imitate the rare and unique qualities of fine bone china. At Lazzaro, we don't believe in pretending to be anything that we are not. We produce the finest bone china. That is not just our word, we provide to clientele globally and they look for the international mark of quality BS 5416; we maintain that exacting standard across all our collections. We create products that we are proud to use, anything less won't do.



# DURAEDGE

---

Our collections have been designed with stress testing to ensure their strength, durability and resistance against chipping, scratches or abrasions, enabling them to withstand the rigours of heavyduty commercial use. Duraedge Technology Lazzaro products, are designed to withstand some of the toughest conditions and remain resilient. Our products consistently outperform other competitors in a variety of test conditions. Like our clients, we continue to innovate, producing high performing tableware for high performance teams.



# HEALTH & WELLBEING

---

We take our customer's health and wellbeing very seriously. Lazzaro products are made from the finest globally sourced materials. Our products are safe, non-toxic, cadmium and lead free. As Lazzaro products are non-porous, they do not absorb grease, odour bacteria. This makes them food safe products, guaranteeing optimal hygiene. Our 360-degree design process incorporates your wellbeing. Our designers think about how to capture the mood for the perfect meal: elegance, joy, fun, laughter, beauty & awe. With Lazzaro you always can host with confidence and your head held high.



## LIGHT AS A BUTTERFLY, STRONG AS A BULL

---

Lazzaro Fine Bone China is **twice as strong** as other bone china variants available and **30% lighter** than porcelain. Our Lazzaro light-weight plates immediately add elegance to your table, style for your guests to enjoy, and ensuring service glides with your gastronomic creations from the kitchen to the dinner table effortlessly.

# JOINING TEAM GREEN

## 21<sup>ST</sup> CENTURY SUSTAINABILITY

---

The Italian concept of “L’arted’arrangiarsi”, the art of making something out of nothing, is a beautiful metaphor for the principle of reducing wastage and it keeps us at Lazzaro creative. Lazzaro is committed to upholding principles of being energy efficient to help minimise our impact on the planet in our manufacturing processes.

We have innovated our process and use less energy and water in our production processes. We reuse all unfired clay and recycle all water to prevent thoughtless disposals. All our packaging is free of Styrofoam and can be completely recycled.

The old wives saying penny wise pound foolish, is essentially a statement on sustainability which we agree with. In a world of fast, disposal, flash in the pan fads, purchasing tableware that remains both relevant and durable is often hard to come by. Our rigorous testing means our products are safe for use in commercial dishwashers, freezers, ovens up to 350°F and microwave ovens. We are so confident in our testing that we offer you our Piece of Mind Guarantee and we are happy to guide you through to find the collection that meets your requirements.

At Lazzaro we don’t compromise on quality, we don’t believe in cutting corners or false economics. We cater to our discerning and financially savvy clients’ needs. We make products to serve the test of time meaning that you can take home the long-term savings. That is the definition of sustainability in our books.



# “ Here for the long run

40% OF RAW MATERIALS ARE BY-PRODUCTS

Resulting in lesser consumption of minerals



## CLEAN ENERGY

We aim to be 100% renewable by 2024

NON-POLLUTANT  
EARTH-FRIENDLY  
RAW MATERIALS

Lead & cadmium free glazes

95% SCRAP RECYCLED

Raw materials, refractory waste, & scrap metal



## MACHINE BUILDING TEAM

Ensuring longevity & life of the machines in order to minimise their disposal



## ZERO WASTE PRODUCTS

Such as water, pitcher waste, unfired clay and packaging



# BRANDS

THAT TRUST US



EMPORIO ARMANI  
CAFFÈ

TAJ

Jumeirah  
HOTELS & RESORTS

  
JW MARRIOTT

  
SHERATON  
EST. 1937

R  
RENAISSANCE®  
HOTELS

  
*Oberoi*  
HOTELS & RESORTS

  
ST REGIS

HYATT

TRIBUTE  
PORTFOLIO

SOFITEL  
LUXURY HOTELS

# THE LAZZARO PROMISE

LIFETIME EDGE CHIP WARRANTY\*



LAZZARO DURAEDGE fine bone china products are up to twice as strong in comparison to regular bone china, new bone china and porcelain and 30% lighter than porcelain. Our DURAEDGE Technology, used on selected Lazzaro products, ensures scratch and chip resistance, meaning fewer replacements and offering our commercial clients value for money without cutting corners on quality.

LAZZARO products marked with our DURAEDGE stamp are designed to withstand some of the toughest conditions and remain resilient, outperforming most other products available. We are so confident in the quality of these products that we offer a **Lifetime Edge Chip Warranty\* on our DURAEDGE collections.**

Compliant with international standards [British BS5416 and European BSEN1900] Lazzaro provides a lifetime anti-chipping warranty on select hospitality collection so you can serve your guests with confidence.





**“Excellence is not an act, but a habit.**

– Aristotle

# OUR COMMITMENT

---

Lazzaro Fine Bone China products undergo rigorous testing standards compliant to British and International standards, only to deliver the best to our discerning clients. With our DURAEDGE Technology, our products will give you the confidence to deliver a service that glides through your kitchens, without any wear and tear. Withstanding the rigours of heavy industrial use, you can now serve your customers with passion and certainty.





# British Standard

5416 & 4034



Edge Chip Resistant

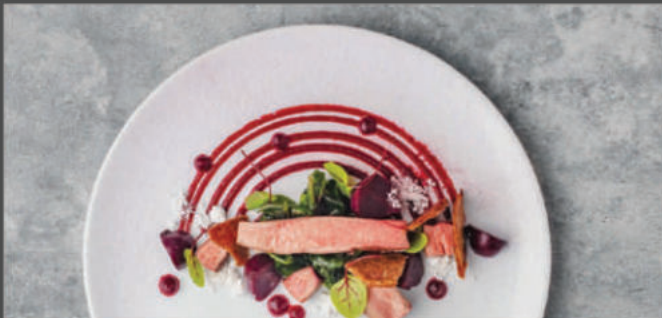


30%  
LIGHTER

2x  
STRONGER



- ✓ Strength
- ✓ Durability
- ✓ Resistance



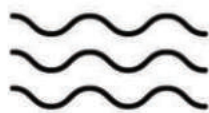
NON - POROUS  
100%  
HYGIENE



Non-Toxic  
Raw Materials  
No Cadmium | No Lead



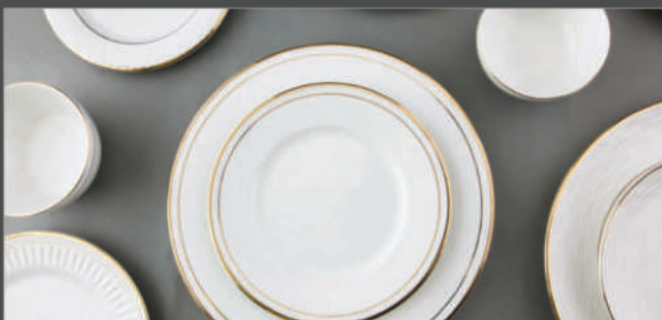
Freezer Safe



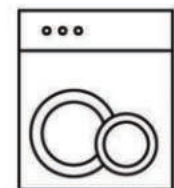
Oven & Microwave  
Safe

## International Testing Standard

COMPLIANT



Thermal Shock  
Resistant



Dishwasher Safe

# HOSPITALITY

## TESTING STANDARDS

---

At LAZZARO, we produce authentic Bone China that comes with an international mark of quality British Standard 5416 and we maintain this exacting standard across all our collections.

We ensure the highest technical skills from our artisans so that LAZZARO Fine Bone China's beguiling translucent shimmer, delicate pure white, and our proprietary glaze culminate a true object of beauty, products that we are proud to use, and that cater to a growing global clientele.

### Our Factories have:

ISO 9001:2015 - QUALITY MANAGEMENT SYSTEMS

SEDEX: SMETA 4-PILLAR



## COMPLIANT WITH WORLD RENOWNED LUCIDEON LABORATORY STANDARDS



Delivering great quality remains at the core of Lazzaro. With continuous upgradation and innovative techniques, Lazzaro's Fine Bone China outperforms all the International Testing Standards.

**BS 5416: BRITISH STANDARD SPECIFICATION FOR CHINA TABLEWARE**  
**BS 4034: BRITISH STANDARD SPECIFICATION FOR VITRIFIED HOTELWARE**

Our products have been tested for the following:

| PARAMETERS                        | HOSPITALITY TESTS & CRITERIA |
|-----------------------------------|------------------------------|
| Handle and knob impact resistance | PT32                         |
| Thermal shock - boiling water     | PT33                         |
| Handle and knob temperature       | PT35                         |
| Freezer to oven safe              | PT36                         |
| Freezer to microwave safe         | PT37                         |
| Water Absorption                  | BS:EN 1217 Meth C            |
| Lip rim metal release             | Lip/Rim ASTM C927-80: 2004   |
| Metal release                     | 2005/31/EC (84/500EEC):2005  |
| Thermal shock endurance           | BS:EN 1183:1997              |
| Edge chipping resistance          | BS:EN 12980                  |
| Static immersion                  | EN12875-4:2006               |
| Microwave                         | BS:EN 15284:2007             |

“Quality is remembered  
long after price is forgotten.

— Aldo Gucci

# CONTEMPORARY DESIGNS

BY INTERNATIONAL DESIGNERS



Angela Hull for LAZZARO



# ANGELA HULL

---

A highly successful creative design professional, Angela works with some of the best-loved global ceramic brands. With a passion for patterns and colours and a love for reimagining heritage and archive collections, her role as design manager for various world-renowned brands saw her creating some best-selling collections over the last 20 years!

An industry expert with experience in leading major projects, some of Angela's have been with Jasper Conran, Miranda Kerr, Lee Broom and Hitomi Hosono. Having received the Ambiente Gift of the Year Award for the Cuckoo tea ware collection, she is particularly renowned for her global success of Tea Stories and Wonderlust for Wedgwood.

Angela's designs are innovative, confident and full of personality. Taking an English country garden and blending stylized floral motifs with eclectic cultural influences, Angela's approach to design is often maximalist and spliced with the unexpectedly modern.



# RICCARDO PATRIZIO

---

The Riccardo Patrizio Collection of tableware is instantly recognisable by its distinctive elegant yet bold designs. The inspiration for the collections is drawn from travels across Italy, whether that be from the unique texture of marble from Carrara to a motif from a fresco in Venice.

Pivotaly, he understands how to reinvent design concepts, making them relevant for a contemporary dining experience. His creative spirit is embodied in his collections producing inimitable modern classics for chic homes.

# NB DESIGNS CO.

---

NB Designs Co. was founded by Neha Bhansali Andrade. In a successful career spanning over 30 years, her signature aesthetic mixing classic elegance with contemporary patterns has been applied across a wide range of designs for womenswear, books and LAZZARO homeware. Educated at Rhode Island School of Design in New York, Neha designed her first collection for LAZZARO in 2014.



## LAZZARO DESIGN LAB

---

At Lazzaro, we strive to translate the evolution of human expression through tactile lines, curves, and edges that leave a unique tangible impression on our hands as well as minds. By being in tune with these learnings from our past, by being one with the centuries-old processes, only then do our in-house team of talented designers dream up new patterns and push the boundaries of what once was.

For our designers, great design also means understanding the one aspect that makes us different from any other living being - the unbounded human potential and the desire to achieve it.

# TABLEWARE







# REACTIVES

Inspired by the rustic colours, textures and imperfections of nature's journey from land to sea, the organic appearance of this range creates a sense of calm honesty, yet delivers striking drama to any tabletop. A meeting of strong colours and burnished textures. Bespoke and handmade by a process that ensures no two appear exactly alike, each piece tells a story. An upgrade from their traditional stoneware counterparts, they are nearly twice as light and available in chip resistant Duraedge. Functional ceramic art that feels raw and refined at the same time.



Available in:  
Blue White | Brown Pink |  
White Grey | White Green





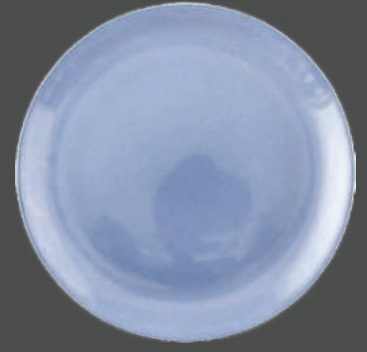
~ Dinner Plate ~  
~ Assiette ~ Teller ~ Plato ~ Piatto ~

D: 10.5" | W: 10.5" | H: 1"  
D: 27cm | W: 27cm | H: 2cm



~ Side Plate ~  
~ Assiette ~ Teller ~ Plato ~ Piatto ~

D: 8" | W: 8" | H: 1"  
D: 21cm | W: 21cm | H: 2cm



Blue White



~ Bowl ~  
~ Bol ~ Schale ~  
~ Bol ~ Ciotola ~

CAP: 150 ml / 5 oz  
D: 4" | W: 4" | H: 2"  
D: 10cm | W: 10cm | H: 4cm



~ Bowl ~  
~ Bol ~ Schale ~  
~ Bol ~ Ciotola ~

CAP: 225 ml / 8 oz  
D: 4" | W: 4" | H: 2"  
D: 10cm | W: 10cm | H: 5cm



Brown Pink



~ Individual/Cereal bowl ~  
~ Coupelle ~ Schälchen ~  
~ Cazoleta ~ Coppetta ~

CAP: 720 ml / 25 oz  
D: 7" | W: 7" | H: 2"  
D: 19cm | W: 19cm | H: 5cm



~ Bowl ~  
~ Bol ~ Schale ~  
~ Bol ~ Ciotola ~

CAP: 1800 ml / 63 oz  
D: 8" | W: 8" | H: 3.5"  
D: 21cm | W: 21cm | H: 9cm



White Grey



~ Platter ~  
~ Platto ~ Platte ~  
~ Fuente ~ Piatto ~

D: 14" | W: 11" | H: 1"  
D: 35cm | W: 28cm | H: 3cm



White Green



Julian Plate

# LA MER





# LA MER

====

Evoke the gentle waves of the sea with the La mer collection. Delicate indents mirror nature's most precious touches, your table lapped by the calm relaxing energy of la mer. As beautiful and peaceful as the water itself, immerse yourself in the waves of the sea.





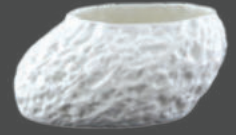
OBA0120 ~ Rock Basket Small ~

CAP: 75 ml  
D: 5" | W: 4" | H: 3"  
D: 12cm | W: 10cm | H: 7cm



OBA1251 ~ Rock Basket Medium ~

CAP: 175 ml  
D: 5" | W: 6" | H: 3"  
D: 12cm | W: 15cm | H: 7cm



OBA1001 ~ Rock Storage Basket ~

CAP: 500 ml  
D: 4" | W: 5" | H: 2.5"  
D: 10cm | W: 14cm | H: 6cm



OBA0902 ~ Oyster ~

CAP: 100 ml  
D: 3.5" | W: 6" | H: 1"  
D: 9cm | W: 16cm | H: 3cm



OBA0901 ~ Fruit Bowl ~

CAP: 190 ml  
D: 3.5" | W: 3.5" | H: 2"  
D: 9cm | W: 9cm | H: 5cm



OBA1751 ~ Leaf ~

D: 7" | W: 7" | H: 1"  
D: 18cm | W: 18cm | H: 2cm



OBA2001 ~ Augratin Bowl ~

CAP: 400 ml  
D: 8" | W: 8" | H: 2"  
D: 20cm | W: 20cm | H: 5cm



OBA0951 ~ Papaya ~

D: 9" | W: 4" | H: 4"  
D: 23cm | W: 10cm | H: 10cm



XAB1001 ~ Shell Bowl ~

CAP: 150 ml  
D: 3" | W: 4" | H: 1"  
D: 8cm | W: 18cm | H: 2cm



LMB1151 ~ Scallop Ramekin ~

D: 3.5" | W: 4.5" | H: 2"  
D: 9cm | W: 12cm | H: 5cm



LMB1601 ~ Conch Bowl ~

D: 6.5" | W: 4.5" | H: 3"  
D: 17cm | W: 12cm | H: 8cm



LMB0901 ~ Urchin Bowl ~

D: 3.5" | W: 3.5" | H: 2"  
D: 9cm | W: 9cm | H: 5cm



OBA2601 ~ Platter ~

D: 11" | W: 6" | H: 1"  
D: 28cm | W: 15cm | H: 3cm

# LA MER

====

Evoke the gentle waves of the sea with the La mer collection. Delicate indents mirror nature's most precious touches, your table lapped by the calm relaxing energy of la mer. As beautiful and peaceful as the water itself, immerse yourself in the waves of the sea.







LMP0301 ~ Spiral Plate ~

D: 12" | W: 12" | H: 5"  
D: 30cm | W: 30cm | H: 2cm



LMP0201 ~ Spiral Plate ~

D: 8.5" | W: 8.5" | H: .5"  
D: 21cm | W: 21cm | H: 2cm



LMP0132 ~ Spiral Plate ~

D: 5" | W: 5" | H: .5"  
D: 12cm | W: 12cm | H: 2cm



LMP0221 ~ Conch Shell Plate ~

D: 8.5" | W: 8.5" | H: 5"  
D: 22cm | W: 22cm | H: 2cm



LMP0133 ~ Conch Shell Plate ~

D: 5" | W: 5" | H: .5"  
D: 12cm | W: 12cm | H: 2cm



LMP0134 ~ Siphonaria Plate ~

D: 5" | W: 5" | H: .5"  
D: 12cm | W: 12cm | H: 2cm



LMP0222~ Periwinkle Plate ~

D: 9" | W: 9" | H: .5"  
D: 22cm | W: 22cm | H: 2cm



LMC0121 ~ Line Cup & Saucer ~

D: 5" | W: 5" | H: .5"  
D: 12cm | W: 12cm | H: 2cm



LMJ0701~ Line Jug ~

CAP: 500 ml  
D: 2.75" | W: 5" | H: .5"  
D: 7cm | W: 12cm | H: 2cm



LMP0121~ Mushroom Plate ~

D: 6" | W: 6" | H: 5"  
D: 16cm | W: 16cm | H: 2cm

# LA MER





# OSLO





# OSLO

==

Dress it up, tone it down, sleek and smooth, the modernistic Oslo collection is the perfect palate for every occasion, from cherished family meals to tastefully designed edible art, every piece exudes an understated elegance.





AJP2551 ~ Plate ~  
~ Assiette ~ Teller ~  
~ Plato ~ Piatto ~

D: 10" | W: 10" | H: 1"  
D: 26cm | W: 26cm | H: 3cm



AJP2101 ~ Plate ~  
~ Assiette ~ Teller ~  
~ Plato ~ Piatto ~

D: 8" | W: 8" | H: 1"  
D: 21cm | W: 21cm | H: 2cm



AJP1601 ~ Plate ~  
~ Assiette ~ Teller ~  
~ Plato ~ Piatto ~

D: 6" | W: 6" | H: 1"  
D: 16cm | W: 16cm | H: 2cm



XAB0885 ~ Bowl ~

CAP: 150 ml  
D: 4" | W: 4" | H: 2"  
D: 10cm | W: 10cm | H: 5cm



XAB0805 ~ Bowl ~

CAP: 130 ml  
D: 3" | W: 3" | H: 1.5"  
D: 8cm | W: 8cm | H: 4cm



XAA0901 ~ Short Bowl ~

CAP: 150 ml  
D: 4" | W: 4" | H: 1"  
D: 10cm | W: 10cm | H: 2cm



AJB0801 ~ Mug ~

CAP: 300 ml / 5 oz  
D: 3" | W: 3" | H: 3"  
D: 8cm | W: 8cm | H: 9cm



AJC0551 ~ Espresso Cup ~

CAP: 110 ml / 4 oz  
D: 2" | W: 2" | H: 2"  
D: 6cm | W: 6cm | H: 6cm



# INGRID



A charming collection that sets a tone of elegance and sophistication at your table. Timeless and romantic, this range allows you to play host with ease as it extends itself to your every need.

Available in:  
Blanc | D'Or | D'Or Luxe | D'Platine







IGP2751 ~ Plate ~  
~ Assiette ~ Teller ~ Plato ~ Piatto ~

D: 10.5" | W: 10.5" | H: 1"  
D: 27cm | W: 27cm | H: 2cm



IGP2101~ Plate ~  
~ Assiette ~ Teller ~  
~ Plato ~ Piatto ~

D: 8" | W: 8" | H: 1"  
D: 21cm | W: 21cm | H: 2cm



IGC0551~ Espresso Cup ~  
~ Tasse ~ Tazza ~

CAP: 110 ml / 4 oz  
D: 2" | W: 3" | H: 2"  
D: 6cm | W: 8cm | H: 6cm



IGS1201 ~ Espresso Saucer ~  
~ Soucoupe ~ Untertasse ~  
~ Platillo ~ Piattino tazza ~

D: 5" | W: 5" | H: 1"  
D: 12cm | W: 12cm | H: 2cm



IGT0901 ~ Coffee pot & lid ~  
~ Cafetière & couvercle ~  
~ Kaffeekanne & Deckel ~  
~ Cafetera & tapa ~  
~ Caffettiera e coperchio ~

CAP: 1000 ml / 32 oz  
D: 3.50" | W: 8" | H: 8"  
D: 9cm | W: 21cm | H: 18cm



IGT1101 ~ Teapot & lid ~  
~ Théière & couvercle ~  
~ Teekanne & Deckel ~  
~ Tetera & tapa ~  
~ Teiera e coperchio ~

CAP: 740 ml / 26 oz  
D: 4" | W: 8" | H: 5.50"  
D: 11cm | W: 21cm | H: 10cm



IGC0801 ~ Tea Cup ~  
~ Tasse a cafe ~ Tazza ~

CAP: 200 ml / 6.7 oz  
D: 3" | W: 4" | H: 2"  
D: 8cm | W: 11cm | H: 6cm



IGS1551 ~ Saucer ~  
~ Soucoupe ~ Untertasse ~  
~ Platillo ~ Piattino tazza ~

D: 6" | W: 6" | H: 1"  
D: 16cm | W: 16cm | H: 2cm



IGW7101 ~ Sugar ~  
~ Sucrier ~ Zuckerdose ~  
~ Azucarero ~ Zuccheriera ~

CAP: 180 ml / 8.27 oz  
D: 3" | W: 3" | H: 2"  
D: 7cm | W: 7cm | H: 6cm



IGV7201 ~ Creamer ~  
~ Crémier ~ Milchkännchen ~  
~ Lechera ~ Screamatrice ~

CAP: 250 ml / 8.27 oz  
D: 3" | W: 4.50" | H: 3"  
D: 7cm | W: 11.5cm | H: 8cm



IGC0802 ~ Cappuccino Cup ~  
~ Tasse a cafe ~ Tazza ~

CAP: 250 ml / 7.39 oz  
D: 3" | W: 4" | H: 3"  
D: 8cm | W: 11.0cm | H: 7cm



IGS1551 ~ Saucer ~  
~ Soucoupe ~ Untertasse ~  
~ Platillo ~ Piattino tazza ~

D: 6" | W: 6" | H: 1"  
D: 15cm | W: 15cm | H: 2cm



Ingrid Plate

# JULIAN



This classic collection acts as a blank canvas for your culinary creations. Simplicity is the aim with these coupe plates in pure white bone china. Bistro-chic and versatile, it is sure to outlast fads and suit every occasion.

Available in:  
Blanc | D'Or | D'Or Luxe | D'Platine





JLP2751 ~ Plate ~  
~ Assiette ~ Teller ~ Plato ~ Piatto ~

D: 10.5" | W: 10.5" | H: 1"  
D: 27cm | W: 27cm | H: 2cm



JLP1951~ Plate ~  
~ Assiette ~ Teller ~ Platto ~ Piatto ~

D: 8" | W: 8" | H: 1"  
D: 21cm | W: 21cm | H: 2cm



JLL3501 ~ Platter ~  
~ Platto ~ Platte ~  
~ Fuente ~ Piatto ~

D: 14" | W: 11" | H: 1"  
D: 35cm | W: 28cm | H: 3cm



JLB2621 ~ Serving bowl ~  
~ Saladier ~ Salatschale ~  
~ Ensaladera ~ Insalatiera ~

CAP: 2100 ml / 74 oz  
D: 10" | W: 10" | H: 3"  
D: 26cm | W: 26cm | H: 7cm



JLB2401 ~ Pasta bowl ~  
~ Coupelle en Pâtes ~ Pasta Schälchen ~  
~ Cazoleta Pasta ~ Coppetta Pasta ~

CAP: 600 ml / 21 oz  
D: 9" | W: 9" | H: 1.5"  
D: 23cm | W: 23cm | H: 4cm



JLB1851 ~ Individual/Cereal bowl ~  
~ Coupelle ~ Schälchen ~  
~ Cazoleta ~ Coppetta ~

CAP: 720 ml / 25 oz  
D: 7" | W: 7" | H: 2"  
D: 19cm | W: 19cm | H: 5cm



JLB6501 ~ Bowl ~  
~ Bol ~ Schale ~  
~ Bol ~ Ciotola ~

CAP: 150 ml / 5 oz  
D: 4" | W: 4" | H: 2"  
D: 10cm | W: 10cm | H: 4cm



JLB1051 ~ Bowl ~  
~ Bol ~ Schale ~  
~ Bol ~ Ciotola ~

CAP: 225 ml / 8 oz  
D: 4" | W: 4" | H: 2"  
D: 10cm | W: 10cm | H: 5cm



JLB2151 ~ Bowl ~  
~ Bol ~ Schale ~  
~ Bol ~ Ciotola ~

CAP: 1800 ml / 63 oz  
D: 8" | W: 8" | H: 3.5"  
D: 21cm | W: 21cm | H: 9cm



JLT1651~ Teapot & lid ~  
~ Théière & couvercle ~  
~ Teekanne & Deckel ~  
~ Tetera & tapa ~ Teiera e coperchio ~

CAP: 1300 ml / 45 oz  
D: 6" | W: 10" | H: 4"  
D: 17cm | W: 25cm | H: 10cm



JLM0901 ~ Mug ~  
~ Chope ~ Becher ~  
~ Mug ~ boccale ~

CAP: 400 ml / 14 oz  
D: 3.5" | W: 5" | H: 3.5"  
D: 9cm | W: 13cm | H: 9cm



JLC0951 ~ Tea/coffee cup ~  
~ Tasse à thé/café ~ Tee- Kaffeetasse ~  
~ Taza a té/café ~ Tazza da tè / caffè ~

CAP: 250 ml / 9 oz  
D: 4" | W: 5" | H: 2"  
D: 10cm | W: 12cm | H: 6cm

# REGAL

By Riccardo Patrizio

---

This sleek bone china collection in pure white is elevated by its embossed design and luxurious finish. Art nouveau inspired petal relief work adds a spark to this otherwise elegant, formal collection.

Available in:  
Blanc | D'Or | D'Or Luxe | D'Platine





RGP2701 ~ Plate ~  
~ Assiette ~ Teller ~ Plato ~ Piatto ~

D: 10.5" | W: 10.5" | H: 1"  
D: 27cm | W: 27cm | H: 2cm



RGP2701 ~ Plate ~  
~ Assiette ~ Teller ~  
~ Plato ~ Piatto ~

D: 8.00" | W: 8.00" | H: 1"  
D: 21cm | W: 21cm | H: 2cm



RGP2101 ~ Saucer ~  
~ Soucoupe ~ Untertasse ~  
~ Platillo ~ Piattino tazza ~

D: 6" | W: 6" | H: 1"  
D: 16cm | W: 16cm | H: 2cm



RGB0060 ~ Bowl ~  
~ Bol ~ Schale ~  
~ Bol ~ Ciotola ~

CAP: 220 ml / 7.5 oz  
D: 4" | W: 4" | H: 2"  
D: 10cm | W: 10cm | H: 5cm



RGC0951 ~ Cup ~  
~ Tasse empilable ~ Tasse stapelbar ~  
~ Taza apilable ~ Tazza sovrapponibile ~

CAP: 250 ml / 9 oz  
D: 4" | W: 5" | H: 3"  
D: 10cm | W: 12cm | H: 7cm



RGB0010 ~ Bowl ~  
~ Bol ~ Schale ~  
~ Bol ~ Ciotola ~

CAP: 1610 ml / 56 oz  
D: 8" | W: 8" | H: 3"  
D: 21cm | W: 21cm | H: 9cm



RGB0061 ~ Bowl ~  
~ Bol ~ Schale ~  
~ Bol ~ Ciotola ~

CAP: 800 ml / 28 oz  
D: 6" | W: 6" | H: 3"  
D: 16cm | W: 16cm | H: 8cm



# ZEN



A collection for everyday use that's anything but ordinary. The Zen collection shape is delightfully puzzling; not quite square, not quite round, it's just zen.





ZNP2921 ~ Plate ~  
~ Assiette ~ Teller ~ Plato ~ Piatto ~

D: 11.5" | W: 11.5" | H: 1"  
D: 30cm | W: 30cm | H: 2cm



ZNP2661 ~ Plate ~  
~ Assiette ~ Teller ~  
~ Plato ~ Piatto ~

D: 10.5" | W: 10.5" | H: 1"  
D: 27cm | W: 27cm | H: 2cm



ZNP2281 ~ Plate ~  
~ Assiette ~ Teller ~  
~ Plato ~ Piatto ~

D: 10" | W: 10" | H: 1"  
D: 25cm | W: 25cm | H: 2cm



ZNS1321 ~ Saucer ~  
~ Soucoupe ~ Untertasse ~  
~ Platico ~ Piattino tazza ~

D: 6" | W: 6" | H: 1"  
D: 16cm | W: 16cm | H: 2cm



ZNC0901 ~ Cup ~  
~ Tasse empilable ~ Tasse stapelbar ~  
~ Taza apilable ~ Tazza sovrapponibile ~

CAP: 220 ml / 7.5 oz  
D: 3" | W: 4.5" | H: 3"  
D: 9cm | W: 11cm | H: 7cm



ZNP2791 ~ Plate ~  
~ Assiette ~ Teller ~  
~ Plato ~ Piatto ~

D: 8" | W: 8" | H: 1"  
D: 21cm | W: 21cm | H: 2cm

# ROBIN



Crisp and light, the Robin collection adds a fresh, clean elegance to your tableware. These classic and timeless plates and Jugs are pretty enough to show off, effortlessly, of course.







BRP2801 ~ Plate ~  
~ Assiette ~ Teller ~ Plato ~ Piatto ~

D: 11" | W: 11" | H: 1"  
D: 29cm | W: 29cm | H: 2cm



RBP2281 ~ Plate ~  
~ Assiette ~ Teller ~  
~ Plato ~ Piatto ~

D: 9" | W: 9" | H: 1"  
D: 23cm | W: 23cm | H: 2cm



RBP1701 ~ Plate ~  
~ Assiette ~ Teller ~  
~ Plato ~ Piatto ~

D: 7" | W: 7" | H: 1"  
D: 17cm | W: 17cm | H: 2cm



RBB3341 ~ Salad bowl ~  
~ Saladier ~ Salatschale ~  
~ Ensaladera ~ Insalatiera ~

CAP: 2250 ml / 80 oz  
D: 12.5" | W: 12.5" | H: 2"  
D: 32cm | W: 32cm | H: 5cm



RBB2361 ~ Pasta bowl ~  
~ Coupelle en Pâtes ~ Pasta Schälchen ~  
~ Cazoleta Pasta ~ Coppetta Pasta ~

CAP: 1350 ml / 47 oz  
D: 9" | W: 9" | H: 2"  
D: 24cm | W: 24cm | H: 5cm



RBB1214 ~ Individual bowl ~  
~ Coupelle ~ Schälchen ~  
~ Cazoleta ~ Coppetta ~

CAP: 720 ml / 25 oz  
D: 5" | W: 5" | H: 3"  
D: 14cm | W: 14cm | H: 8cm



RBL5501 ~ Platter ~  
~ Plat ~ Platte ~  
~ Fuente ~ Piatto ~

D: 20" | W: 20" | H: 1"  
D: 51cm | W: 19cm | H: 2cm



RBM0741 ~ Small Mug ~  
~ Espresso Mug ~ Chope à espresso ~  
~ Espresso Becher ~ Mug a espresso ~  
~ Tazza di caffè espresso

CAP: 220 ml / 7.5 oz  
D: 3.5" | W: 4.5" | H: 3.5"  
D: 9cm | W: 12cm | H: 9cm



RBM0831 ~ Mug ~  
~ Chope ~ Becher ~  
~ Mug ~ boccale ~

CAP: 310 ml / 11 oz  
D: 7" | W: 4" | H: 3"  
D: 18cm | W: 10cm | H: 8cm



RBJ1901 ~ Jug ~  
~ Carafe ~ Karaffe ~  
~ Jarra ~ Caraffa ~

CAP: 300 ml / 11 oz  
D: 3" | W: 4" | H: 3.5"  
D: 7cm | W: 10cm | H: 9cm



RBJ1131 ~ Jug ~  
~ Carafe ~ Karaffe ~  
~ Jarra ~ Caraffa ~

CAP: 600 ml / 21 oz  
D: 3" | W: 6" | H: 5"  
D: 7cm | W: 16cm | H: 12cm



RBJ1251 ~ Jug ~  
~ Carafe ~ Karaffe ~  
~ Jarra ~ Caraffa ~

CAP: 1120 ml / 39 oz  
D: 3" | W: 7" | H: 7"  
D: 8cm | W: 18cm | H: 19cm

# LINEA

## DURAEDGE



Evoke the gentle waves of the sea with the La mer collection. Delicate indents mirror nature's most precious touches, your table lapped by the calm relaxing energy of la mer. As beautiful and peaceful as the water itself, immerse yourself in the waves of the sea.

By Riccardo Patrizio





LSP2951 ~ Plate ~  
~ Assiette ~ Teller ~ Plato ~ Piatto ~

D: 11.5" | W: 11.5" | H: 1"  
D: 30cm | W: 30cm | H: 3cm



LSP2701 ~ Plate ~  
~ Assiette ~ Teller ~  
~ Plato ~ Piatto ~

D: 10.5" | W: 10.5" | H: 1"  
D: 27cm | W: 27cm | H: 2cm



LSP2301 ~ Plate ~  
~ Assiette ~ Teller ~  
~ Plato ~ Piatto ~

D: 9" | W: 9" | H: 1"  
D: 23cm | W: 23cm | H: 2cm



LSS1451 ~ Saucer ~  
~ Soucoupe ~ Untertasse ~  
~ Platillo ~ Piattino tazza ~

D: 6" | W: 6" | H: 1"  
D: 15cm | W: 15cm | H: 2cm



LSP1801 ~ Plate ~  
~ Assiette ~ Teller ~  
~ Plato ~ Piatto ~

D: 7" | W: 7" | H: 1"  
D: 19cm | W: 19cm | H: 2cm



LSC0901 ~ Cup ~  
~ Tasse empilable ~ Tasse  
stapelbar ~  
~ Taza apilable ~ Tazza  
sovrapponibile ~

CAP: 230ml / 8 oz  
D: 3" | W: 4" | H: 2"  
D: 9cm | W: 11cm | H: 6cm



LSB1101 ~ Soup Bowl ~  
~ Tasse bouillon empilable ~  
~ Bouillontasse stapelbar ~  
~ Taza consomé apilable ~  
~ Tazza da brodo sovrapponibile ~

CAP: 300 ml / 10.5 oz  
D: 4" | W: 4" | H: 2"  
D: 11cm | W: 11cm | H: 6cm

# ARISTO CHECKER

DURAEDGE



Charming and unique, Aristo plates, saucers, and bowls have a tangible checkered surface for a memorable detail as joyful as every gathering.





ACP2951~ Plate ~  
~ Assiette ~ Teller ~ Plato ~ Piatto ~

D: 11.5" | W: 11.5" | H: 1"  
D: 30cm | W: 30cm | H: 3cm



ACP2701~ Plate ~  
~ Assiette ~ Teller ~  
~ Plato ~ Piatto ~

D: 10.5" | W: 10.5" | H: 1"  
D: 27cm | W: 27cm | H: 2cm



ACP2351 ~ Plate ~  
~ Assiette ~ Teller ~  
~ Plato ~ Piatto ~

D: 9" | W: 9" | H: 1"  
D: 23cm | W: 23cm | H: 2cm



ACS1551~ Saucer ~  
~ Soucoupe ~ Untertasse ~  
~ Platillo ~ Piattino tazza ~

D: 6" | W: 6" | H: 1"  
D: 16cm | W: 16cm | H: 2cm



ACP1841 ~ Plate ~  
~ Assiette ~ Teller ~  
~ Plato ~ Piatto ~

D: 7" | W: 7" | H: 1"  
D: 18cm | W: 18cm | H: 2cm



ACC0901 ~ cup ~  
~ Tasse empilable ~ Tasse stapelbar ~  
~ Taza apilable ~ Tazza sovrapponibile ~

CAP: 245 ml / 9 oz  
D: 3" | W: 4" | H: 2.5"  
D: 9cm | W: 11cm | H: 7cm



ACP1801~ Soup Bowl ~  
~ Tasse bouillon empilable ~  
~ Bouillontasse stapelbar ~  
~ Taza consomé apilable ~  
~ Tazza da brodo sovrapponibile ~

CAP: 300 ml / 10 oz  
D: 4" | W: 4" | H: 2"  
D: 11cm | W: 11cm | H: 6cm

# DIAMOND

DURAEDGE

Transform your dinner party with our luxurious range reinforced with chip-resistant Duraedge. Each piece is finished with a subtle matrix pattern for added elegance. Diamonds are known for their rarity and strength. This collection is built to last a lifetime, both in terms of durability and timeless design. Team with matching classic white pieces for a relaxed yet sophisticated appearance.





DSP2951~ Plate ~  
~ Assiette ~ Teller ~ Plato ~ Piatto ~

D: 11.5" | W: 11.5" | H: 1"  
D: 30cm | W: 30cm | H: 3cm



DSP2701 ~ Plate ~  
~ Assiette ~ Teller ~  
~ Plato ~ Piatto ~

D: 10.5" | W: 10.5" | H: 1"  
D: 27cm | W: 27cm | H: 2cm



DSP2351 ~ Plate ~  
~ Assiette ~ Teller ~  
~ Plato ~ Piatto ~

D: 9" | W: 9" | H: 1"  
D: 23cm | W: 23cm | H: 2cm



DSS1451 ~ Saucer ~  
~ Soucoupe ~ Untertasse ~  
~ Platillo ~ Piattino tazza ~

D: 6" | W: 6" | H: 1"  
D: 16cm | W: 16cm | H: 2cm



DSP1851 ~ Plate ~  
~ Assiette ~ Teller ~  
~ Plato ~ Piatto ~

D: 7" | W: 7" | H: 1"  
D: 18cm | W: 18cm | H: 2cm



DSC0851~ Stackable cup ~  
~ Tasse empilable ~ Tasse stapelbar ~  
~ Taza apilable ~ Tazza sovrapponibile ~

CAP: 230 ml / 8 oz  
D: 3" | W: 4" | H: 2"  
D: 9cm | W: 11cm | H: 6cm



DSB1101 ~ Soup Bowl ~  
~ Tasse bouillon empilable ~  
~ Bouillontasse stapelbar ~  
~ Taza consomé apilable ~  
~ Tazza da brodo sovrapponibile ~

CAP: 300 ml / 10.5 oz  
D: 4" | W: 4" | H: 2"  
D: 11cm | W: 11cm | H: 6cm

# SCALLOP

DURAEDGE



Scalloped tableware dates back to the 1800s and is a classic design that one can never go wrong with. Set in brilliant white bone china and reinforced with Duraedge to prevent chipping, it is designed to add distinction to your dinner table.







FSP2921 ~ Plate ~  
~ Assiette ~ Teller ~ Plato ~ Piatto ~

D: 11.5" | W: 11.5" | H: 1"  
D: 30cm | W: 30cm | H: 3cm



FSP2661 ~ Plate ~  
~ Assiette ~ Teller ~  
~ Plato ~ Piatto ~

D: 10.5" | W: 10.5" | H: 1"  
D: 27cm | W: 27cm | H: 2cm



FSP2281 ~ Plate ~  
~ Assiette ~ Teller ~  
~ Plato ~ Piatto ~

D: 9" | W: 9" | H: 1"  
D: 23cm | W: 23cm | H: 2cm



FSS1321 ~ Saucer ~  
~ Soucoupe ~ Untertasse ~  
~ Platillo ~ Piattino tazza ~

D: 6" | W: 6" | H: 1"  
D: 16cm | W: 16cm | H: 2cm



FSP1841 ~ Plate ~  
~ Assiette ~ Teller ~  
~ Plato ~ Piatto ~

D: 7" | W: 7" | H: 1"  
D: 18cm | W: 18cm | H: 2cm



FSC0901 ~ Stackable cup ~  
~ Tasse empilable ~ Tasse  
stapelbar ~  
~ Taza apilable ~ Tazza  
sovrapponibile ~

CAP: 230 ml / 8 oz  
D: 3" | W: 4" | H: 2"  
D: 9cm | W: 11cm | H: 6cm



FSB1101 ~ Soup Bowl ~  
~ Tasse bouillon empilable ~  
~ Bouillontasse stapelbar ~  
~ Taza consomé apilable ~  
~ Tazza da brodo sovrapponibile ~

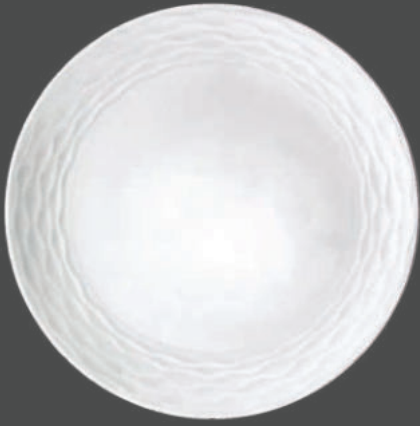
CAP: 300 ml / 10.5 oz  
D: 4" | W: 4" | H: 2"  
D: 11cm | W: 11cm | H: 6cm

# WAVE

## DURAEEDGE

Reminiscent of a gentle breeze set against the sounds of the ocean as it meets the shore. This calming pattern is easily blended with other pieces, and yet stands out with a charm of its own. Here we combined coastal charm with that of refined sophistication, ensuring a table setting with winning versatility.





WVP2901~ Plate ~  
~ Assiette ~ Teller ~ Plato ~ Piatto ~

D: 11.5" | W: 11.5" | H: 1"  
D: 30cm | W: 30cm | H: 3cm



WVP2701~ Plate ~  
~ Assiette ~ Teller ~  
~ Plato ~ Piatto ~

D: 10.5" | W: 10.5" | H: 1"  
D: 27cm | W: 27cm | H: 2cm



WVP2351 ~ Plate ~  
~ Assiette ~ Teller ~  
~ Plato ~ Piatto ~

D: 9" | W: 9" | H: 1"  
D: 23cm | W: 23cm | H: 2cm



WVS1451 ~ Saucer ~  
~ Soucoupe ~ Untertasse ~  
~ Platillo ~ Piattino tazza ~

D: 6" | W: 6" | H: 1"  
D: 16cm | W: 16cm | H: 2cm



WVP1851~ Plate ~  
~ Assiette ~ Teller ~  
~ Plato ~ Piatto ~

D: 7" | W: 7" | H: 1"  
D: 18cm | W: 18cm | H: 2cm



WVC0901 ~ Stackable cup ~  
~ Tasse empilable ~ Tasse  
stapelbar ~  
~ Taza apilable ~ Tazza  
sovrapponibile ~

CAP: 230 ml / 8 oz  
D: 3" | W: 4" | H: 2"  
D: 9cm | W: 11cm | H: 6cm



WVB1101 ~ Soup Bowl stackable ~  
~ Tasse bouillon empilable ~  
~ Bouillontasse stapelbar ~  
~ Taza consomé apilable ~  
~ Tazza da brodo sovrapponibile ~

CAP: 300 ml / 10.5 oz  
D: 4" | W: 4" | H: 2"  
D: 11cm | W: 11cm | H: 6cm

# RIMMED

DURAEDGE





GSP2901~ Plate ~  
~ Assiette ~ Teller ~ Plato ~ Piatto ~

D: 11.5" | W: 11.5" | H: 1"  
D: 30cm | W: 30cm | H: 3cm



GSP2701 ~ Plate ~  
~ Assiette ~ Teller ~  
~ Plato ~ Piatto ~

D: 10.5" | W: 10.5" | H: 1"  
D: 27cm | W: 27cm | H: 2cm



GSP2301~ Plate ~  
~ Assiette ~ Teller ~  
Plato ~ Piatto ~

D: 9" | W: 9" | H: 1"  
D: 23cm | W: 23cm | H: 2cm



GSS1451 ~ Saucer ~  
~ Soucoupe ~ Untertasse ~  
~ Platillo ~ Piattino tazza ~

D: 6" | W: 6" | H: 1"  
D: 16cm | W: 16cm | H: 2cm



GSS1801 ~ Plate ~  
~ Assiette ~ Teller ~  
~ Plato ~ Piatto ~

D: 7" | W: 7" | H: 1"  
D: 18cm | W: 18cm | H: 2cm



GSC0851 ~ Stackable cup ~  
~ Tasse empilable ~ Tasse  
stapelbar ~  
~ Taza apilable ~ Tazza  
sovrapponibile ~

CAP: 230 ml / 8 oz  
D: 3" | W: 4" | H: 2"  
D: 9cm | W: 11cm | H: 6cm



GSB1101 ~ Soup Bowl stackable ~  
~ Tasse bouillon empilable~  
~ Bouillontasse stapelbar ~  
~ Taza consomé apilable ~  
~ Tazza da brodo sovrapponibile ~

CAP: 300 ml / 10.5 oz  
D: 4" | W: 4" | H: 2"  
D: 11cm | W: 11cm | H: 6cm

# HARMONY

DURAEDGE



Harmony collection takes soft strokes from artists to surprise your tableware with an essence of sophistication and artistry.





HSP2901~ Plate ~  
~ Assiette ~ Teller ~ Plato ~ Piatto ~

D: 11.5" | W: 11.5" | H: 1"  
D: 30cm | W: 30cm | H: 3cm



HSP2701 ~ Plate ~  
~ Assiette ~ Teller ~  
~ Plato ~ Piatto ~

D: 10.5" | W: 10.5" | H: 1"  
D: 27cm | W: 27cm | H: 2cm



HSP2301 ~ Plate ~  
~ Assiette ~ Teller ~  
~ Plato ~ Piatto ~

D: 9" | W: 9" | H: 1"  
D: 23cm | W: 23cm | H: 2cm



HSS1451 ~ Saucer ~  
~ Soucoupe ~ Untertasse ~  
~ Platillo ~ Piattino tazza ~

D: 6" | W: 6" | H: 1"  
D: 16cm | W: 16cm | H: 2cm



HSP1851 ~ Plate ~  
~ Assiette ~ Teller ~  
~ Plato ~ Piatto ~

D: 7" | W: 7" | H: 1"  
D: 18cm | W: 18cm | H: 2cm



HSC0851~ Stackable cup ~  
~ Tasse empilable ~ Tasse stapelbar ~  
~ Taza apilable ~ Tazza sovrapponibile ~

CAP: 230 ml / 8 oz  
D: 3" | W: 4" | H: 2"  
D: 9cm | W: 11cm | H: 6cm



HSB1101 ~ Soup Bowl ~  
~ Tasse bouillon empilable ~  
~ Bouillontasse stapelbar ~  
~ Taza consomé apilable ~  
~ Tazza da brodo sovrapponibile ~

CAP: 300 ml / 10.5 oz  
D: 4" | W: 4" | H: 2"  
D: 11cm | W: 11cm | H: 6cm

# SUFI

DURAEDGE







SUP2901 ~ Plate ~  
~ Assiette ~ Teller ~ Plato ~ Piatto ~

D: 11.5" | W: 11.5" | H: 1"  
D: 30cm | W: 30cm | H: 3cm



SUP2701 ~ Plate ~  
~ Assiette ~ Teller ~  
~ Plato ~ Piatto ~

D: 10.5" | W: 10.5" | H: 1"  
D: 27cm | W: 27cm | H: 2cm



SUP2281 ~ Plate ~  
~ Assiette ~ Teller ~  
~ Plato ~ Piatto ~

D: 9" | W: 9" | H: 1"  
D: 23cm | W: 23cm | H: 2cm



SUS1451 ~ Saucer ~  
~ Soucoupe ~ Untertasse ~  
~ Platillo ~ Piattino tazza ~

D: 6" | W: 6" | H: 1"  
D: 16cm | W: 16cm | H: 2cm



SUP1851 ~ Plate ~  
~ Assiette ~ Teller ~  
~ Plato ~ Piatto ~

D: 7" | W: 7" | H: 1"  
D: 18cm | W: 18cm | H: 2cm



SUS1451 ~ Cup ~  
~ Tasse empilable ~ Tasse stapelbar ~  
~ Taza apilable ~ Tazza sovrapponibile ~

CAP: 230 ml / 8 oz  
D: 3" | W: 4" | H: 2"  
D: 9cm | W: 11cm | H: 6cm



SUB1101 ~ Soup Bowl ~  
~ Tasse bouillon empilable ~  
~ Bouillontasse stapelbar ~  
~ Taza consomé apilable ~  
~ Tazza da brodo sovrapponibile ~

CAP: 300 ml / 10,5 oz  
D: 4" | W: 4" | H: 2"  
D: 11cm | W: 11cm | H: 6cm

# GALAXY

DURAEDGE



For those who love making statements, yet in a refined, soft, manner, the Galaxy collection is for you. The trim features three rings in a subtle progression, creating an impressive design that no one will forget.





GXP2901 ~ Plate ~  
~ Assiette ~ Teller ~ Plato ~ Piatto ~

D: 11.5" | W: 11.5" | H: 1"  
D: 30cm | W: 30cm | H: 3cm



GXP2701~ Plate ~  
~ Assiette ~ Teller ~  
~ Plato ~ Piatto ~

D: 10.5" | W: 10.5" | H: 1"  
D: 27cm | W: 27cm | H: 2cm



GXP2301 ~ Plate ~  
~ Assiette ~ Teller ~  
~ Plato ~ Piatto ~

D: 9" | W: 9" | H: 1"  
D: 23cm | W: 23cm | H: 2cm



GXS1321 ~ Saucer ~  
~ Soucoupe ~ Untertasse ~  
~ Platillo ~ Piattino tazza ~

D: 6" | W: 6" | H: 1"  
D: 16cm | W: 16cm | H: 2cm



GXP1851 ~ Plate ~  
~ Assiette ~ Teller ~  
~ Plato ~ Piatto ~

D: 7" | W: 7" | H: 1"  
D: 18cm | W: 18cm | H: 2cm



GXC0851 ~ Stackable cup ~  
~ Tasse empilable ~ Tasse  
stapelbar ~  
~ Taza apilable ~ Tazza  
sovrapponibile ~

CAP: 230 ml / 8 oz  
D: 3" | W: 4" | H: 2"  
D: 9cm | W: 11cm | H: 6cm



GXB1101 ~ Soup Bowl ~  
~ Tasse bouillon empilable ~  
~ Bouillontasse stapelbar ~  
~ Taza consomé apilable ~  
~ Tazza da brodo sovrapponibile ~

CAP: 300 ml / 10.5 oz  
D: 4" | W: 4" | H: 2"  
D: 11cm | W: 11cm | H: 6cm

# MATRIX

DURAEDGE



Stand out with the Matrix collection. A design unlike any other combined with DuraEdge technology guarantees long lasting use so each meal is as beautiful as the first.





MTP2951~ Plate ~  
~ Assiette ~ Teller ~ Plato ~ Piatto ~

D: 11.5" | W: 11.5" | H: 1"  
D: 30cm | W: 30cm | H: 3cm



MTP2701 ~ Plate ~  
~ Assiette ~ Teller ~  
~ Plato ~ Piatto ~

D: 10.5" | W: 10.5" | H: 1"  
D: 27cm | W: 27cm | H: 2cm



MTP2281~ Plate ~  
~ Assiette ~ Teller ~  
Plato ~ Piatto ~

D: 9" | W: 9" | H: 1"  
D: 23cm | W: 23cm | H: 2cm



MTS1501~ Sauce r ~  
~ Soucoupe ~ Untertasse ~  
~ Platillo ~ Piattino tazza ~

D: 6" | W: 6" | H: 1"  
D: 16cm | W: 16cm | H: 2cm



MTP1841 ~ Plate ~  
~ Assiette ~ Teller ~  
~ Plato ~ Piatto ~

D: 7" | W: 7" | H: 1"  
D: 18cm | W: 18cm | H: 2cm



MTC0851~ Stackable cup ~  
~ Tasse empilable ~ Tasse  
stapelbar ~  
~ Taza apilable ~ Tazza  
sovrapponibile ~

CAP: 230 ml / 8 oz  
D: 3" | W: 4" | H: 2"  
D: 9cm | W: 11cm | H: 6cm



MTB1101 ~ Soup Bowl stackable ~  
~ Tasse bouillon empilable ~  
~ Bouillontasse stapelbar ~  
~ Taza consomé apilable ~  
~ Tazza da brodo sovrapponibile ~

CAP: 300 ml / 10.5 oz  
D: 4" | W: 4" | H: 2"  
D: 11cm | W: 11cm | H: 6cm

# COUPE

DURAEDGE



Grace and simplicity, what more could you want on your table? The Coupe collection is not only timeless in style, but also ageless with DuraEdge technology. A must-have for all, entertainers and homebodies alike.





UMP2921 ~ Plate ~  
~ Assiette ~ Teller ~ Plato ~ Piatto ~

D: 11.5" | W: 11.5" | H: 1"  
D: 30cm | W: 30cm | H: 3cm



UMP2661 ~ Plate ~  
~ Assiette ~ Teller ~  
~ Plato ~ Piatto ~

D: 10.5" | W: 10.5" | H: 1"  
D: 27cm | W: 27cm | H: 2cm



UMP2281 ~ Plate ~  
~ Assiette ~ Teller ~  
~ Plato ~ Piatto ~

D: 9" | W: 9" | H: 1"  
D: 23cm | W: 23cm | H: 2cm



UMP2791 ~ Plate ~  
~ Assiette ~ Teller ~  
~ Plato ~ Piatto ~

D: 7" | W: 7" | H: 1"  
D: 18cm | W: 18cm | H: 2cm



UMB1111 ~ Soup Bowl ~  
~ Tasse bouillon empilable ~  
~ Bouillontasse stapelbar ~  
~ Taza consomé apilable ~  
~ Tazza da brodo sovrapponibile ~

CAP: 300 ml / 10.5 oz  
D: 4" | W: 4" | H: 2"  
D: 11cm | W: 11cm | H: 6cm

# DECORATIVE TABLEWARE







# MARBLE

By Riccardo Patrizio

Modern whilst also minimalist, this is just the thing to add elegance to your contemporary table setting. Featuring textured marble, designed in crisp white or black with 24-karat gold speckling. There is no doubt that this collection will make a lasting impression on your guests. Ideal for mix and match, these sets can be used interchangeably for the perfect look.





~ Dinner Plate ~

D: 10.5" | W: 10.5" | H: 1"  
D: 27cm | W: 27cm | H: 2cm



~ Side Plate Plate ~

D: 8" | W: 8" | H: 1"  
D: 21cm | W: 21cm | H: 2cm



~ Platter ~

D: 14" | W: 11" | H: 1"  
D: 35cm | W: 28cm | H: 3cm



~ Soup Spoon ~

D: 2" | W: 6" | H: 2"  
D: 5cm | W: 14cm | H: 4cm



~ Katori ~

CAP: 150 ml / 5 oz  
D: 4" | W: 4" | H: 2"  
D: 10cm | W: 10cm | H: 4cm



~ Soup bowl ~

CAP: 225 ml / 8 oz  
D: 4" | W: 4" | H: 2"  
D: 10cm | W: 10cm | H: 5cm



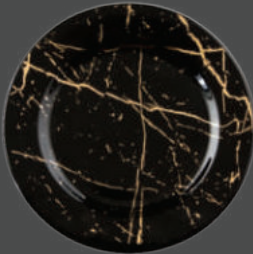
~ Serving Bowl ~

CAP: 720 ml / 25 oz  
D: 7" | W: 7" | H: 2"  
D: 19cm | W: 19cm | H: 5cm



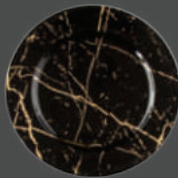
~ Serving Bowl ~

CAP: 1800 ml / 63 oz  
D: 8" | W: 8" | H: 3.5"  
D: 21cm | W: 21cm | H: 9cm



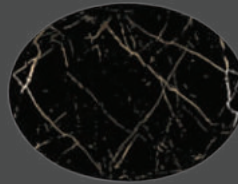
~ Dinner Plate ~

D: 10.5" | W: 10.5" | H: 1"  
D: 27cm | W: 27cm | H: 2cm



~ Side Plate Plate ~

D: 8" | W: 8" | H: 1"  
D: 21cm | W: 21cm | H: 2cm



~ Platter ~

D: 14" | W: 11" | H: 1"  
D: 35cm | W: 28cm | H: 3cm



~ Soup Spoon ~

D: 2" | W: 6" | H: 2"  
D: 5cm | W: 14cm | H: 4cm



~ Katori ~

CAP: 150 ml / 5 oz  
D: 4" | W: 4" | H: 2"  
D: 10cm | W: 10cm | H: 4cm



~ Soup bowl ~

CAP: 225 ml / 8 oz  
D: 4" | W: 4" | H: 2"  
D: 10cm | W: 10cm | H: 5cm



~ Serving Bowl ~

CAP: 720 ml / 25 oz  
D: 7" | W: 7" | H: 2"  
D: 19cm | W: 19cm | H: 5cm



~ Serving Bowl ~

CAP: 1800 ml / 63 oz  
D: 8" | W: 8" | H: 3.5"  
D: 21cm | W: 21cm | H: 9cm

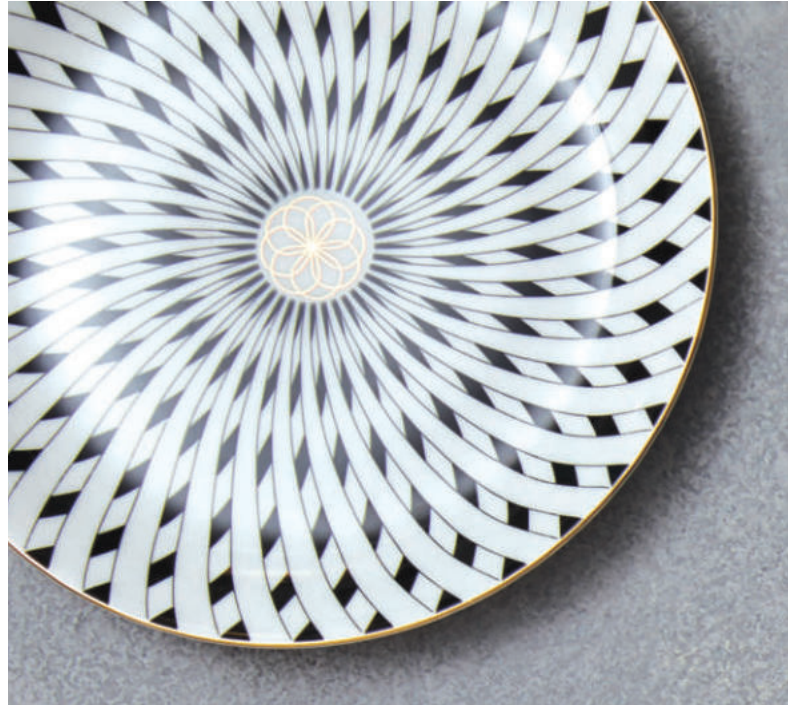
# FIORI DELLA VITA

By NB Designs Co.

---

A set featuring 6 unique designs, sold exclusively in a set of 6.

This monochromatic collection is a bestseller. Iconic to Lazzaro, it works extremely well in almost any setting. The name Fiori Della Vita literally translates to 'flower of life' - after the motif found at the centre of each piece tying the diversity of designs together. Inspired by the geometric drawings of Da Vinci, they represent the magic in the mundane, the elevation of the ordinary.





~ Dinner Plate ~

D: 10.5" | W: 10.5" | H: 1"  
D: 27cm | W: 27cm | H: 2cm



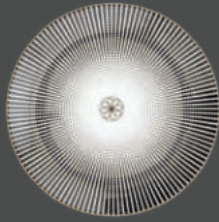
~ Platter ~

D: 14" | W: 11" | H: 1"  
D: 35cm | W: 28cm | H: 3cm



~ Side Plate Plate ~

D: 8" | W: 8" | H: 1"  
D: 21cm | W: 21cm | H: 2cm



~ Side Plate Plate ~

D: 8" | W: 8" | H: 1"  
D: 21cm | W: 21cm | H: 2cm



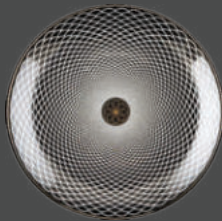
~ Side Plate Plate ~

D: 8" | W: 8" | H: 1"  
D: 21cm | W: 21cm | H: 2cm



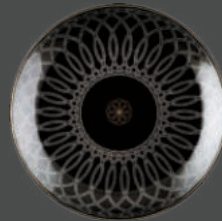
~ Side Plate Plate ~

D: 8" | W: 8" | H: 1"  
D: 21cm | W: 21cm | H: 2cm



~ Side Plate Plate ~

D: 8" | W: 8" | H: 1"  
D: 21cm | W: 21cm | H: 2cm



~ Side Plate Plate ~

D: 8" | W: 8" | H: 1"  
D: 21cm | W: 21cm | H: 2cm



~ Soup bowl ~

CAP: 225 ml / 8 oz  
D: 4" | W: 4" | H: 2"  
D: 10cm | W: 10cm | H: 5cm



~ Katori ~

CAP: 150 ml / 5 oz  
D: 4" | W: 4" | H: 2"  
D: 10cm | W: 10cm | H: 4cm



~ Serving Bowl ~

CAP: 720 ml / 25 oz  
D: 7" | W: 7" | H: 2"  
D: 19cm | W: 19cm | H: 5cm



~ Serving Bowl ~

CAP: 1800 ml / 63 oz  
D: 8" | W: 8" | H: 3.5"  
D: 21cm | W: 21cm | H: 9cm



~ Soup Spoon ~

D: 2" | W: 6" | H: 2"  
D: 5cm | W: 14cm | H: 4cm

# JARDIN BLEU

Set in blue and white fine bone china, this is a contemporary take on vintage design. Celebrating the best of Western tradition and Eastern style, this collection stands the test of time. Best paired with sparkling conversation.





~ Dinner Plate ~

D: 10.5" | W: 10.5" | H: 1"  
D: 27cm | W: 27cm | H: 2cm



~ Side Plate Plate ~

D: 8" | W: 8" | H: 1"  
D: 21cm | W: 21cm | H: 2cm



~ Platter ~

D: 14" | W: 11" | H: 1"  
D: 35cm | W: 28cm | H: 3cm



~ Katori ~

CAP: 150 ml / 5 oz  
D: 4" | W: 4" | H: 2"  
D: 10cm | W: 10cm | H: 4cm



~ Soup bowl ~

CAP: 225 ml / 8 oz  
D: 4" | W: 4" | H: 2"  
D: 10cm | W: 10cm | H: 5cm



~ Serving Bowl ~

CAP: 870 ml / 30 oz  
D: 7" | W: 7" | H: 2"  
D: 18cm | W: 18cm | H: 6cm



~ Serving Bowl With Lid ~

CAP: 2000 ml / 70 oz  
D: 8" | W: 10.5" | H: 4"  
D: 21cm | W: 27cm | H: 11cm



~ Serving Bowl ~

CAP: 1800 ml / 63 oz  
D: 8" | W: 8" | H: 3.5"  
D: 21cm | W: 21cm | H: 9cm



~ Soup Spoon ~

D: 2" | W: 6" | H: 2"  
D: 5cm | W: 14cm | H: 4cm



~ Sugar Pot ~

CAP: 340 ml / 12 oz  
D: 4" | W: 4" | H: 4"  
D: 10cm | W: 10cm | H: 11cm



~ Creamer ~

CAP: 300ml / 10.5 oz  
D: 3" | W: 4" | H: 4"  
D: 9cm | W: 10cm | H: 10cm



~ Tea Pot~

CAP: 1400ml / 50 oz  
D: 5" | W: 10" | H: 7"  
D: 12cm | W: 25cm | H: 18.5cm



Tea Cup & Saucer

CAP: 250 ml / 9oz  
D: 4" | W: 4.5" | H: 3"  
D: 10cm | W: 12cm | H: 7cm



Espresso Cup & Saucer

CAP: 110ml / 4 oz  
D: 4" | W: 4" | H: 3"  
D: 8.5cm | W: 8.5cm | H: 6 cm

# LAVENDER

Inspired by nature, each piece in this collection bears a floral motif. Set the right tone with an attractive culinary canvas. Ideal for any table setting, it will add an instant vintage-inspired charm to everyday dining. Makes for a fantastic gift on any occasion.







~ Dinner Plate ~

D: 10.5" | W: 10.5" | H: 1"  
D: 27cm | W: 27cm | H: 2cm



~ Side Plate ~

D: 8" | W: 8" | H: 1"  
D: 21cm | W: 21cm | H: 2cm



~ Serving Bowl ~

CAP: 870 ml / 30 oz  
D: 7" | W: 7" | H: 2"  
D: 18cm | W: 18cm | H: 6cm



~ Katori ~

CAP: 150 ml / 5 oz  
D: 4" | W: 4" | H: 2"  
D: 10cm | W: 10cm | H: 4cm



~ Soup bowl ~

CAP: 225 ml / 8 oz  
D: 4" | W: 4" | H: 2"  
D: 10cm | W: 10cm | H: 5cm



~ Serving Bowl ~

CAP: 1800 ml / 63 oz  
D: 8" | W: 8" | H: 3.5"  
D: 21cm | W: 21cm | H: 9cm



~ Sugar Pot ~

CAP: 340 ml / 12 oz  
D: 4" | W: 4" | H: 4"  
D: 10cm | W: 10cm | H: 11cm



~ Creamer ~

CAP: 300ml / 10.5 oz  
D: 3" | W: 4" | H: 4"  
D: 9cm | W: 10cm | H: 10cm



~ Tea Pot ~

CAP: 1400ml / 50 oz  
D: 5" | W: 10" | H: 7"  
D: 12cm | W: 25cm | H: 18.5cm



Tea Cup & Saucer

CAP: 250 ml / 9oz  
D: 4" | W: 4.5" | H: 3"  
D: 10cm | W: 12cm | H: 7cm



Espresso Cup & Saucer

CAP: 110ml / 4 oz  
D: 4" | W: 4" | H: 3"  
D: 8.5cm | W: 8.5cm | H: 6 cm

# MAXIMALIST BY ANGELA HULL





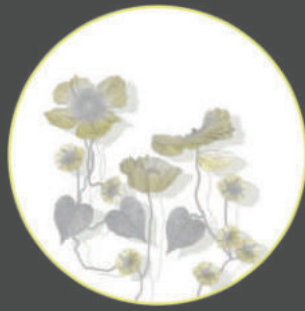
# GARDEN SHADOWS





~ Morning Glory ~  
Side Plate Plate

D: 8" | W: 8" | H: 1"  
D: 21cm | W: 21cm | H: 2cm



~ Poppy Fields ~  
Side Plate Plate

D: 8" | W: 8" | H: 1"  
D: 21cm | W: 21cm | H: 2cm



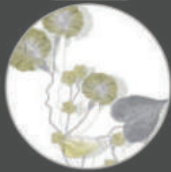
~ Wild Lilly ~  
Side Plate Plate

D: 8" | W: 8" | H: 1"  
D: 21cm | W: 21cm | H: 2cm



~ Yellow Orchid ~  
Side Plate Plate

D: 8" | W: 8" | H: 1"  
D: 21cm | W: 21cm | H: 2cm



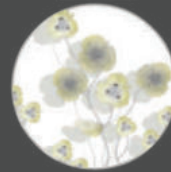
~ Morning Glory ~  
Espresso Cup & Saucer

CAP: 110ml / 4 oz  
D: 4" | W: 4" | H: 3"  
D: 8.5cm | W: 8.5cm | H: 6 cm



~ Poppy Fields ~  
Espresso Cup & Saucer

CAP: 110ml / 4 oz  
D: 4" | W: 4" | H: 3"  
D: 8.5cm | W: 8.5cm | H: 6 cm



~ Wild Lilly ~  
Espresso Cup & Saucer

CAP: 110ml / 4 oz  
D: 4" | W: 4" | H: 3"  
D: 8.5cm | W: 8.5cm | H: 6 cm



~ Yellow Orchid ~  
Espresso Cup & Saucer

CAP: 110ml / 4 oz  
D: 4" | W: 4" | H: 3"  
D: 8.5cm | W: 8.5cm | H: 6 cm



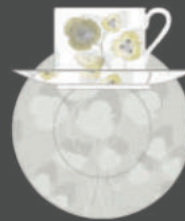
~ Morning Glory ~  
Tea Cup & Saucer

CAP: 200 ml / 8 oz  
D: 3" | W: 3" | H: 2.5"  
D: 8cm | W: 8cm | H: 6.5cm



~ Poppy Fields ~  
Tea Cup & Saucer

CAP: 200 ml / 8 oz  
D: 3" | W: 3" | H: 2.5"  
D: 8cm | W: 8cm | H: 6.5cm



~ Wild Lilly ~  
Tea Cup & Saucer

CAP: 200 ml / 8 oz  
D: 3" | W: 3" | H: 2.5"  
D: 8cm | W: 8cm | H: 6.5cm



~ Yellow Orchid ~  
Tea Cup & Saucer

CAP: 200 ml / 8 oz  
D: 3" | W: 3" | H: 2.5"  
D: 8cm | W: 8cm | H: 6.5cm



~ Wild Lilly ~  
Sugar Pot

CAP: 340 ml / 12 oz  
D: 4" | W: 4" | H: 4"  
D: 10cm | W: 10cm | H: 11cm



~ Poppy Fields ~  
Creamer

CAP: 300ml / 10.5 oz  
D: 3" | W: 4" | H: 4"  
D: 9cm | W: 10cm | H: 10cm



~ Yellow Orchid ~  
Tea Pot

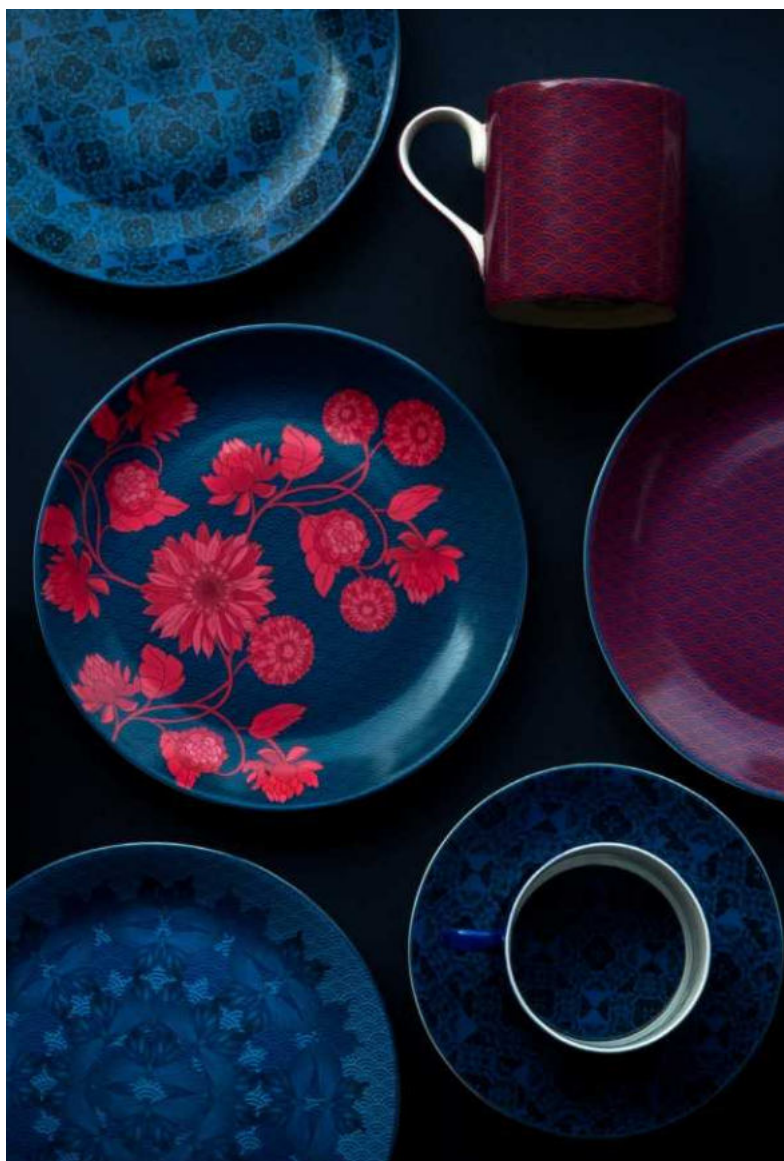
CAP: 1400ml / 50 oz  
D: 5" | W: 10" | H: 7"  
D: 12cm | W: 25cm | H: 18.5cm

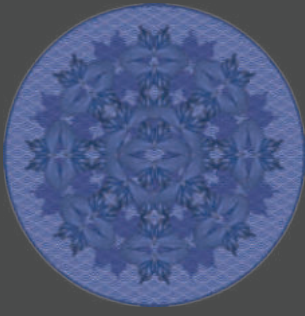


~ Morning Glory ~  
Coffee Pot

CAP: 1400ml / 50 oz  
D: 5" | W: 10" | H: 7"  
D: 12cm | W: 25cm | H: 18.5cm

# MAXIMALIST





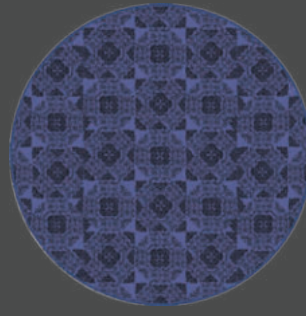
~ Butterfly Wing ~  
Side Plate Plate

D: 8" | W: 8" | H: 1"  
D: 21cm | W: 21cm | H: 2cm



~ Oriental Wave ~  
Side Plate Plate

D: 8" | W: 8" | H: 1"  
D: 21cm | W: 21cm | H: 2cm



~ Persian Blue ~  
Side Plate Plate

D: 8" | W: 8" | H: 1"  
D: 21cm | W: 21cm | H: 2cm



~ Scarlet Dahlia ~  
Side Plate Plate

D: 8" | W: 8" | H: 1"  
D: 21cm | W: 21cm | H: 2cm



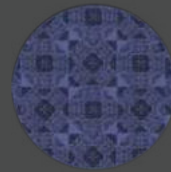
~ Butterfly Wing ~  
Espresso Cup & Saucer

CAP: 110ml / 4 oz  
D: 4" | W: 4" | H: 3"  
D: 8.5cm | W: 8.5cm | H: 6 cm



~ Oriental Wave ~  
Espresso Cup & Saucer

CAP: 110ml / 4 oz  
D: 4" | W: 4" | H: 3"  
D: 8.5cm | W: 8.5cm | H: 6 cm



~ Persian Blue ~  
Espresso Cup & Saucer

CAP: 110ml / 4 oz  
D: 4" | W: 4" | H: 3"  
D: 8.5cm | W: 8.5cm | H: 6 cm



~ Scarlet Dahlia ~  
Espresso Cup & Saucer

CAP: 110ml / 4 oz  
D: 4" | W: 4" | H: 3"  
D: 8.5cm | W: 8.5cm | H: 6 cm



~ Butterfly Wing ~  
Tea Cup & Saucer

CAP: 200 ml / 8 oz  
D: 3" | W: 3" | H: 2.5"  
D: 8cm | W: 8cm | H: 6.5cm



~ Oriental Wave ~  
Tea Cup & Saucer

CAP: 200 ml / 8 oz  
D: 3" | W: 3" | H: 2.5"  
D: 8cm | W: 8cm | H: 6.5cm



~ Persian Blue ~  
Tea Cup & Saucer

CAP: 200 ml / 8 oz  
D: 3" | W: 3" | H: 2.5"  
D: 8cm | W: 8cm | H: 6.5cm



~ Scarlet Dahlia ~  
Tea Cup & Saucer

CAP: 200 ml / 8 oz  
D: 3" | W: 3" | H: 2.5"  
D: 8cm | W: 8cm | H: 6.5cm



~ Butterfly Wing ~  
Sugar Pot

CAP: 340 ml / 12 oz  
D: 4" | W: 4" | H: 4"  
D: 10cm | W: 10cm | H: 11cm



~ Oriental Wave ~  
Creamer

CAP: 300ml / 10.5 oz  
D: 3" | W: 4" | H: 4"  
D: 9cm | W: 10cm | H: 10cm



~ Maximalist GD ~  
Tea Pot

CAP: 1400ml / 50 oz  
D: 5" | W: 10" | H: 7"  
D: 12cm | W: 25cm | H: 18.5cm



~ Oriental Wave ~  
Coffee Pot

CAP: 1400ml / 50 oz  
D: 5" | W: 10" | H: 7"  
D: 12cm | W: 25cm | H: 18.5cm

# SUMMER GARDEN







~ Garden Orchid ~  
Side Plate Plate

D: 8" | W: 8" | H: 1"  
D: 21cm | W: 21cm | H: 2cm



~ Summer Blooms ~  
Side Plate Plate

D: 8" | W: 8" | H: 1"  
D: 21cm | W: 21cm | H: 2cm



~ Crysanthemum ~  
Side Plate Plate

D: 8" | W: 8" | H: 1"  
D: 21cm | W: 21cm | H: 2cm



~ Blue Daisy ~  
Side Plate Plate

D: 8" | W: 8" | H: 1"  
D: 21cm | W: 21cm | H: 2cm



~ Garden Orchid ~  
Angela Mug

CAP: 350ml / 11 oz  
D: 4" | W: 4" | H: 3"  
D: 8.5cm | W: 12cm | H: 9 cm



~ Summer Blooms ~  
Angela Mug

CAP: 350ml / 11 oz  
D: 4" | W: 4" | H: 3"  
D: 8.5cm | W: 12cm | H: 9 cm



~ Crysanthemum ~  
Angela Mug

CAP: 350ml / 11 oz  
D: 4" | W: 4" | H: 3"  
D: 8.5cm | W: 12cm | H: 9 cm



~ Blue Daisy ~  
Angela Mug

CAP: 350ml / 11 oz  
D: 4" | W: 4" | H: 3"  
D: 8.5cm | W: 12cm | H: 9 cm

# TEA/COFFEEWARE





# NOIR

By Riccardo Patrizio

---

In classic black and white with a hint of luxurious gold, each Noir collection is a bestseller. The geometric design catches the eye, and works naturally alongside anything. Pair with all-white tableware for a clean and contemporary table setting, or add gold-toned accessories for regal opulence while you entertain.





~ Coffee pot~

—  
CAP: 900ml / 30 oz  
D: 4" | W: 5" | H: 5"  
D: 8.5cm | W: 20cm | H: 20cm



~ Creamer ~

—  
CAP: 300ml / 10.5 oz  
D: 3" | W: 4" | H: 4"  
D: 9cm | W: 10cm | H: 10cm



~ Tea Pot~

—  
CAP: 750ml / 25 oz  
D: 4.5" | W: 8" | H: 5.5"  
D: 11cm | W: 22cm | H: 14cm



~ Sugar Pot ~

—  
CAP: 180 ml / 6 oz  
D: 3" | W: 3" | H: 2.5"  
D: 7cm | W: 7cm | H: 6.5cm



~ Tea Cup & Saucer ~

—  
CAP: 200 ml / 8 oz  
D: 3" | W: 3" | H: 2.5"  
D: 8cm | W: 8cm | H: 6.5cm



~ Espresso Cup & Saucer ~

—  
CAP: 110ml / 4 oz  
D: 4" | W: 4" | H: 3"  
D: 8.5cm | W: 8.5cm | H: 6 cm



~ Cappuccino Cup & Saucer ~

—  
CAP: 250ml / 9 oz  
D: 4" | W: 4" | H: 3"  
D: 8.5cm | W: 8.5cm | H: 8cm



~ Espresso Cup & Saucer ~

CAP: 110ml / 4 oz  
D: 4" | W: 4" | H: 3"  
D: 8.5cm | W: 8.5cm | H: 6 cm



~ Espresso Cup & Saucer ~

CAP: 110ml / 4 oz  
D: 4" | W: 4" | H: 3"  
D: 8.5cm | W: 8.5cm | H: 6 cm



~ Espresso Cup & Saucer ~

CAP: 110ml / 4 oz  
D: 4" | W: 4" | H: 3"  
D: 8.5cm | W: 8.5cm | H: 6 cm



~ Espresso Cup & Saucer ~

CAP: 110ml / 4 oz  
D: 4" | W: 4" | H: 3"  
D: 8.5cm | W: 8.5cm | H: 6 cm



~ Espresso Cup & Saucer ~

CAP: 110ml / 4 oz  
D: 4" | W: 4" | H: 3"  
D: 8.5cm | W: 8.5cm | H: 6 cm



~ Espresso Cup & Saucer ~

CAP: 110ml / 4 oz  
D: 4" | W: 4" | H: 3"  
D: 8.5cm | W: 8.5cm | H: 6 cm



~ Tea Cup & Saucer ~

CAP: 200 ml / 8 oz  
D: 3" | W: 3" | H: 2.5"  
D: 8cm | W: 8cm | H: 6.5cm



~ Tea Cup & Saucer ~

CAP: 200 ml / 8 oz  
D: 3" | W: 3" | H: 2.5"  
D: 8cm | W: 8cm | H: 6.5cm



~ Tea Cup & Saucer ~

CAP: 200 ml / 8 oz  
D: 3" | W: 3" | H: 2.5"  
D: 8cm | W: 8cm | H: 6.5cm



~ Tea Cup & Saucer ~

CAP: 200 ml / 8 oz  
D: 3" | W: 3" | H: 2.5"  
D: 8cm | W: 8cm | H: 6.5cm



~ Tea Cup & Saucer ~

CAP: 200 ml / 8 oz  
D: 3" | W: 3" | H: 2.5"  
D: 8cm | W: 8cm | H: 6.5cm



~ Tea Cup & Saucer ~

CAP: 200 ml / 8 oz  
D: 3" | W: 3" | H: 2.5"  
D: 8cm | W: 8cm | H: 6.5cm



~ Cappuccino Cup & Saucer ~

CAP: 250ml / 9 oz  
D: 4" | W: 4" | H: 3"  
D: 8.5cm | W: 8.5cm | H: 8cm



~ Cappuccino Cup & Saucer ~

CAP: 250ml / 9 oz  
D: 4" | W: 4" | H: 3"  
D: 8.5cm | W: 8.5cm | H: 8cm



~ Cappuccino Cup & Saucer ~

CAP: 250ml / 9 oz  
D: 4" | W: 4" | H: 3"  
D: 8.5cm | W: 8.5cm | H: 8cm



~ Cappuccino Cup & Saucer ~

CAP: 250ml / 9 oz  
D: 4" | W: 4" | H: 3"  
D: 8.5cm | W: 8.5cm | H: 8cm



~ Cappuccino Cup & Saucer ~

CAP: 250ml / 9 oz  
D: 4" | W: 4" | H: 3"  
D: 8.5cm | W: 8.5cm | H: 8cm



~ Cappuccino Cup & Saucer ~

CAP: 250ml / 9 oz  
D: 4" | W: 4" | H: 3"  
D: 8.5cm | W: 8.5cm | H: 8cm



~ Stripes Vertical ~

CAP: 290 ml / 10 oz  
D: 3" | W: 3" | H: 4"  
D: 7.5cm | W: 7.5cm | H: 8.5cm



~ Dots White ~

CAP: 290 ml / 10 oz  
D: 3" | W: 3" | H: 4"  
D: 7.5cm | W: 7.5cm | H: 8.5cm



~ Chevron Black ~

CAP: 290 ml / 10 oz  
D: 3" | W: 3" | H: 4"  
D: 7.5cm | W: 7.5cm | H: 8.5cm



~ Stripes Horizontal ~

CAP: 290 ml / 10 oz  
D: 3" | W: 3" | H: 4"  
D: 7.5cm | W: 7.5cm | H: 8.5cm



~ Dots Black ~

CAP: 290 ml / 10 oz  
D: 3" | W: 3" | H: 4"  
D: 7.5cm | W: 7.5cm | H: 8.5cm



Chevron White

CAP: 290 ml / 10 oz  
D: 3" | W: 3" | H: 4"  
D: 7.5cm | W: 7.5cm | H: 8.5cm

# MUGS

---

We know nothing compares to wrapping your hands around a warm, perfectly shaped mug filled with your favorite tea or cappuccino, which is why Lazzaro takes special care to offer only the best mugs.

Say goodbye to the boring and bland mugs of yesteryears and hello to the chic and modern Lazzaro mugs. For a look as stylish and effortless as you.

Whether you are lounging with a morning mug or dishing out tea with friends, there is a bone china mug for every occasion. Perfect for a thoughtful gift that will actually be used, Lazzaro Fine Bone China mugs serve memories with each sip.







~ Marie ~  
~ Chope ~ Becher ~  
~ Mug ~ Boccale ~

—  
CAP: 330ml / 11 oz  
D: 3" | W: 4" | H: 5"  
D: 8cm | W: 10cm | H: 13cm



XAM0751 ~ Balmoral ~  
Mug ~ Chope ~ Becher ~  
~ Mug ~ Boccale ~

—  
CAP: 290 ml / 10 oz  
D: 3" | W: 3" | H: 4"  
D: 7.5cm | W: 7.5cm | H: 8.5cm



XAM0901 ~ Margaret ~  
~ Chope ~ Becher ~  
~ Mug ~ Boccale ~

—  
CAP: 440 ml / 14 oz  
D: 4" | W: 5" | H: 4"  
D: 9cm | W: 12cm | H: 9cm



XAM0801 ~ Royale Mug ~  
~ Chope ~ Becher ~  
~ Mug ~ Boccale ~

—  
CAP: 260ml / 9 oz  
D: 3" | W: 4" | H: 4"  
D: 8cm | W: 10cm | H: 9cm



XAM0851 ~ Willow Mug ~  
~ Chope ~ Becher ~  
~ Mug ~ Boccale ~

—  
CAP: 310ml / 11 oz  
D: 4" | W: 5" | H: 5"  
D: 8.5cm | W: 13cm | H: 12cm



XAM0902 ~ Tudor Mug ~  
~ Chope ~ Becher ~  
~ Mug ~ Boccale ~

—  
CAP: 300ml / 10 oz  
D: 4" | W: 5" | H: 3"  
D: 9cm | W: 12cm | H: 8.5cm



XAM0903 ~ Cherry Mug ~  
~ Chope ~ Becher ~  
~ Mug ~ Boccale ~

—  
CAP: 340ml / 12 oz  
D: 3.5" | W: 5" | H: 4"  
D: 9cm | W: 12cm | H: 9cm



XAM0752 ~ Stacker Mug ~  
~ Chope ~ Becher ~  
~ Mug ~ Boccale ~

—  
CAP: 330ml / 10 oz  
D: 3" | W: 5" | H: 4"  
D: 7.5cm | W: 12cm | H: 9.5cm



XAM0904 ~ Olive Mug ~  
~ Chope ~ Becher ~  
~ Mug ~ Boccale ~

—  
CAP: 360ml / 12 oz  
D: 4" | W: 5" | H: 4"  
D: 9cm | W: 12cm | H: 9cm



XAM0905 ~ Flirt ~  
~ Chope ~ Becher ~  
~ Mug ~ Boccale ~

—  
CAP: 390ml / 13 oz  
D: 3.5" | W: 5" | H: 4"  
D: 9cm | W: 12cm | H: 10cm



XAM0906 ~ Aspen Mug ~  
~ Chope ~ Becher ~  
~ Mug ~ Boccale ~

—  
CAP: 400ml / 14 oz  
D: 3.5" | W: 5" | H: 4"  
D: 9cm | W: 12.5cm | H: 10.5cm

# TEA & COFFEE



A beautiful tea and coffee set is a right of passage in every elegant and chic home. Finding a set that doesn't look like it belongs to your grandparents is effortless with our collection of modern teaware. No need to dust off cobwebs with Lazzaro tea and coffee sets.

Tea time is in vogue again and our range of fine china tea kettles, teapots, saucers, cake stands, and sandwich trays are perfect for a contemporary soirée. Each design is elevated to fit your vibrant lifestyle, bringing fresh life to a traditional pastime.





MRT1201 ~ Teapot & lid ~  
 ~ Th  iere & couvercle ~  
 Teekanne & Deckel ~  
 ~ Tetera & tapa ~  
 ~ Teiera e coperchio ~

—  
 CAP: 1400ml / 50 oz  
 D: 5" | W: 10" | H: 7"  
 D: 12cm | W: 25cm | H: 18.5cm



MRW1021 ~ Sugar ~  
 ~ Sucrier ~ Zuckerdose ~  
 ~ Azucarero ~ Zuccheriera ~

—  
 CAP: 300ml / 10.5 oz  
 D: 3" | W: 4" | H: 4"  
 D: 9cm | W: 10cm | H: 10cm



MRV8401 ~ Creamer ~  
 ~ Cr  mier ~ Milchk  nnchen ~  
 ~ Lechera ~ Screamatrice ~

—  
 CAP: 340 ml / 12 oz  
 D: 4" | W: 4" | H: 4"  
 D: 10cm | W: 10cm | H: 11cm



MRC0951 ~ Tea Cup ~  
 ~ Tasse ~ Tazza ~

—  
 CAP: 250 ml / 9oz  
 D: 4" | W: 4.5" | H: 3"  
 D: 10cm | W: 12cm | H: 7cm



MRC9301 ~ Coffee Cup ~  
 ~ Tasse a cafe ~ Tazza ~

—  
 CAP: 290 ml / 11oz  
 D: 4" | W: 5.5" | H: 3"  
 D: 10.5cm | W: 14cm | H: 8cm



MRS1501 ~ Saucer ~  
 ~ Soucoupe ~ Untertasse ~  
 ~ Platillo ~ Piattino tazza ~

—  
 D: 6" | W: 6" | H: 2"  
 D: 15cm | W: 15cm | H: 2cm



MRS1521 ~ Saucer ~  
 ~ Soucoupe ~ Untertasse ~  
 ~ Platillo ~ Piattino tazza ~

—  
 D: 6" | W: 6" | H: 2"  
 D: 15cm | W: 15cm | H: 2cm



VTA0501~ Teapot & lid ~  
~ Th  iere & couvercle ~  
~ Teekanne & Deckel ~  
~ Tetera & tapa ~  
~ Teiera e coperchio ~

---

CAP: 1400ml / 50 oz  
D: 12" | W: 4" | H: 5"  
D: 30cm | W: 11cm | H: 14cm



XAV1801 ~ Sugar ~  
~ Sucrier ~ Zuckerdose ~  
~ Azucarero ~ Zuccheriera ~

---

CAP: 300ml / 10,5 oz  
D: 2" | W: 7" | H: 4"  
D: 5cm | W: 18cm | H: 10cm



XAV1801 ~ Creamer ~  
~ Cr  mier ~ Milchk  nnchen ~  
~ Lechera ~ Scrematrice ~

---

CAP: 300ml / 10.5 oz  
D: 2" | W: 7" | H: 4"  
D: 5cm | W: 18cm | H: 10cm



XAC7201 ~ Tea Cup ~  
~ Tasse ~ Tasse ~ Taza ~ Tazza ~

---

CAP: 150ml / 5 oz  
D: 3" | W: 4" | H: 2"  
D: 8cm | W: 10cm | H: 5cm



XAS1221 ~ Saucer ~  
~ Soucoupe ~ Untertasse ~  
~ Platillo ~ Piattino tazza ~

---

D: 5" | W: 5" | H: 1"  
D: 12cm | W: 12cm | H: 2cm



ECT0851 ~ Elegance Teapot & lid 6 Cup ~

CAP: 1500ml / 50 oz  
D: 3.5" | W: 9" | H: 8"  
D: 9cm | W: 23cm | H: 21cm



ECT0852 ~ Elegance Teapot & lid 4 Cup ~

CAP: 900ml / 32 oz  
D: 3.5" | W: 8" | H: 7"  
D: 9cm | W: 20cm | H: 18cm



ECT0801 ~ Elegance Teapot & lid 2 Cup~

CAP: 500ml / 18 oz  
D: 3" | W: 7" | H: 6"  
D: 8cm | W: 19cm | H: 15cm



ECV0601 ~ Elegance Creamer 6 Cup ~

CAP: 375ml / 14 oz  
D: 2" | W: 4.5" | H: 4"  
D: 6cm | W: 12cm | H: 11cm



ECV0551 ~ Elegance Creamer 4 Cup ~

CAP: 200ml / 7 oz  
D: 2" | W: 4" | H: 3.5"  
D: 6cm | W: 11cm | H: 9cm



ECV0501 ~ Elegance Creamer 2 Cup ~

CAP: 165ml / 6 oz  
D: 2" | W: 3.5" | H: 3"  
D: 5cm | W: 9cm | H: 8cm



ECW0651 ~ Elegance Sugar Oval ~

CAP: 200ml / 7 oz  
D: 2.5" | W: 4" | H: 2"  
D: 7cm | W: 10cm | H: 5cm



ECW0551 ~ Elegance Sugar Rect ~

CAP: 110ml / 4 oz  
D: 2" | W: 3" | H: 2"  
D: 6cm | W: 7cm | H: 5cm

# CUPS & SAUCER





XAC0901 ~ Tea Cup Saucer GHB ~

CAP: 250ml / 9 oz  
D: 3.5" | W: 4.5" | H: 7"  
D: 9cm | W: 11cm | H: 7cm



XAC0902 ~ Tea Cup Saucer HRB ~

CAP: 220ml / 8 oz  
D: 3.5" | W: 4.5" | H: 2"  
D: 9cm | W: 11cm | H: 6cm



XAC0701 ~ Tea Cup Saucer HRS ~

CAP: 120ml / 4 oz  
D: 3" | W: 4" | H: 2"  
D: 7cm | W: 10cm | H: 5cm



XAC0802 ~ Tea Cup Saucer RTDC ~

CAP: 200ml / 7 oz  
D: 3" | W: 4" | H: 2"  
D: 8cm | W: 10cm | H: 6cm



~ Tea Cup Saucer HW Small ~

CAP: 120ml / 4 oz  
D: 3" | W: 4" | H: 2"  
D: 7cm | W: 11cm | H: 5cm



XAC0801 ~ Tea Cup Saucer Elegance ~

CAP: 300ml / 10.5 oz  
D: 3.5" | W: 5" | H: 3"  
D: 9cm | W: 12cm | H: 8cm



~ Tea Cup Saucer Stackable Small ~

CAP: 120ml / 4 oz  
D: 3" | W: 4" | H: 2"  
D: 7cm | W: 9cm | H: 5cm



~ Cup Saucer Espresso ~

CAP: 110ml / 4 oz  
D: 4" | W: 4" | H: 3"  
D: 8.5cm | W: 8.5cm | H: 6cm



XAC0801 ~ Cup Saucer Kawa ~

CAP: 120ml / 4 oz  
D: 3" | W: 3" | H: 2"  
D: 12cm | W: 12cm | H: 3cm

# JUGS







SAJ0901 ~ Jug ~  
~ Carafe ~ Karaffe ~ Jarra ~ Caraffa ~

---

CAP: 1050ml / 37 oz  
D: 4" | W: 3.5" | H: 5"  
D: 105cm | W: 9cm | H: 13cm



SAJ0812 ~ Jug ~  
~ Carafe ~ Karaffe ~  
~ Jarra ~ Caraffa ~

---

CAP: 540ml / 19 oz  
D: 2" | W: 3" | H: 4"  
D: 54cm | W: 8cm | H: 11cm



SAJ0811 ~ Jug ~  
~ Carafe ~ Karaffe ~  
~ Jarra ~ Caraffa ~

---

CAP: 250ml / 9 oz  
D: 10" | W: 3" | H: 3.5"  
D: 27cm | W: 7cm | H: 9cm



SAJ0671 ~ Jug ~  
~ Carafe ~ Karaffe ~  
~ Jarra ~ Caraffa ~

---

CAP: 120ml / 4 oz  
D: 3" | W: 3" | H: 2"  
D: 8cm | W: 8cm | H: 5cm

# ACCESSORIES







PTR0801 ~ Pickle Tray Set Rect ~

D: 9" | W: 3" | H: 1"  
D: 22cm | W: 8cm | H: 2cm



PTT1701 ~ Pickle Tray Set Triangular ~

D: 7" | W: 7" | H: 2"  
D: 17cm | W: 17cm | H: 2cm



SAA1301 ~ Butter dish ~

D: 5.5" | W: 7" | H: 3.5"  
D: 14cm | W: 18.5cm | H: 9cm



XHB1181 ~ Handi Small ~

CAP: 390ml / 14 oz  
D: 5" | W: 5" | H: 2"  
D: 12cm | W: 13cm | H: 5cm



XHB1701 ~ Handi Big ~

CAP: 1500ml / 52 oz  
D: 7" | W: 7" | H: 3.5"  
D: 17cm | W: 19cm | H: 9cm



NAH1441 ~ Napkin Holder ~

D: 5" | W: 2" | H: 3"  
D: 14cm | W: 4cm | H: 7cm



XAA0421 ~ Salt Pepper GG ~

D: 2" | W: 2" | H: 3"  
D: 4cm | W: 4cm | H: 8cm



XAA0472 ~ Salt Pepper HW ~

D: 2" | W: 2" | H: 3"  
D: 5cm | W: 5cm | H: 8cm



AJC0601 ~ Tooth Pick Holder ~

CAP: 120ml / 6 oz  
D: 2" | W: 2" | H: 2"  
D: 6cm | W: 6cm | H: 6cm



XAB0901 ~ Ramekin Bowl Big~

CAP: 170ml / 6 oz  
D: 3.5" | W: 3.5" | H: 2"  
D: 9cm | W: 9cm | H: 5cm



XAB0801 ~ Ramekin Bowl Medium ~

CAP: 100ml / 4 oz  
D: 3" | W: 3" | H: 2"  
D: 8cm | W: 8cm | H: 4cm



XAB0701 ~ Ramekin Bowl Small ~

CAP: 50ml / 2 oz  
D: 3" | W: 3" | H: 1"  
D: 7cm | W: 7cm | H: 3cm



~ XAB0803 ~ Snack Rectangle Dish small ~

CAP: 45ml / 2 oz  
D: 3" | W: 3" | H: 1"  
D: 8cm | W: 8cm | H: 2cm



~ XAB1651 ~ Vital Square ~

CAP: 500ml / 18 oz  
D: 6" | W: 6.5" | H: 2"  
D: 17cm | W: 17cm | H: 6cm



~ ZNB1001 ~ Zen Katori ~

CAP: 190ml / 7 oz  
D: 4" | W: 4" | H: 2"  
D: 10cm | W: 10cm | H: 4cm



XAB0651 ~ Thali Bowl 7cm ~

CAP: 50ml / 1 oz  
D: 3" | W: 3" | H: 1"  
D: 7cm | W: 7cm | H: 3cm



XAB0802 ~ Thali Bowl 8cm ~

CAP: 90ml / 3 oz  
D: 3" | W: 3" | H: 1"  
D: 8cm | W: 8cm | H: 3cm



XAB1002 ~ Thali Bowl 9cm ~

CAP: 170ml / 6 oz  
D: 4" | W: 4" | H: 1.5"  
D: 10cm | W: 10cm | H: 4cm



XAB0751 ~ Ramekin RK9 Bowl ~

—  
CAP: 100ml / 4 oz  
D: 3" | W: 3" | H: 2"  
D: 10cm | W: 10cm | H: 4cm



XAB0951 ~ Bowl KR9 ~

—  
CAP: 100ml / 4 oz  
D: 4" | W: 4" | H: 1.5"  
D: 10cm | W: 10cm | H: 4cm



XAA0952 ~ Ashtray Round ~

—  
D: 4" | W: 4" | H: 1"  
D: 10cm | W: 10cm | H: 3cm



XAB0752 ~ Bowl ~

—  
CAP: 25ml / 1 oz  
D: 3" | W: 3" | H: 1"  
D: 8cm | W: 8cm | H: 2cm



XAB1652 ~ Bowl 6" ~

—  
CAP: 400ml / 14 oz  
D: 6" | W: 6" | H: 2"  
D: 17cm | W: 17cm | H: 5cm



XAB1901 ~ Bowl 7" ~

—  
CAP: 560ml / 20 oz  
D: 7" | W: 7" | H: 2"  
D: 19cm | W: 19cm | H: 5cm



SUP2301 ~ Soup Plate 9" ~

—  
CAP: 500ml / 16 oz  
D: 9" | W: 9" | H: 2"  
D: 23cm | W: 23cm | H: 6cm



SUP2601 ~ Soup Plate 10" ~

—  
CAP: 600ml / 20 oz  
D: 10" | W: 10" | H: 2.5"  
D: 26cm | W: 26cm | H: 8cm



ZNA1251 ~ Soap Dish ~

—  
D: 3" | W: 5" | H: 1.5"  
D: 7cm | W: 13cm | H: 3cm



XAB1501 ~ Bowl 6" ~

CAP: 650ml / 23 oz  
D: 6" | W: 6" | H: 2"  
D: 15cm | W: 15cm | H: 6cm



XAB1801 ~ Bowl 7" ~

CAP: 870ml / 30 oz  
D: 7" | W: 7" | H: 2"  
D: 18cm | W: 18cm | H: 6cm



BOW2001 ~ Bowl 8" ~

CAP: 1220ml / 42 oz  
D: 8" | W: 8" | H: 2"  
D: 20cm | W: 20cm | H: 6cm



XAB1401 ~ Vital Square ~

CAP: 290ml / 10 oz  
D: 5" | W: 5" | H: 2"  
D: 14cm | W: 15cm | H: 5cm



BOWQ1601 ~ Vital Square ~

CAP: 470ml / 16 oz  
D: 6" | W: 6" | H: 2"  
D: 16cm | W: 17cm | H: 6cm



BOWQ2101 ~ Vital Square ~

CAP: 1000ml / 37 oz  
D: 8" | W: 9" | H: 3"  
D: 21cm | W: 22cm | H: 7cm



BOWQ2651 ~ Vital Square ~

CAP: 2000ml / 70 oz  
D: 10.5" | W: 10" | H: 3"  
D: 27cm | W: 27cm | H: 7cm



BOWA1751 ~ Angular Bowl Small ~

CAP: 340ml / 12 oz  
D: 7" | W: 7" | H: 3"  
D: 18cm | W: 17cm | H: 9cm



BOWA2001 ~ Angular Bowl Big ~

CAP: 600ml / 21 oz  
D: 8" | W: 8" | H: 4"  
D: 20cm | W: 20cm | H: 10cm



XAP2501 ~ Oval Platter ~  
~ Plat ~ Platte ~ Fuente ~ Piatto ~

D: 10" | W: 7" | H: 1"  
D: 25cm | W: 18cm | H: 2cm



XAP3251 ~ Oval Platter ~  
~ Plat ~ Platte ~ Fuente ~ Piatto ~

D: 13" | W: 8" | H: 1"  
D: 33cm | W: 21cm | H: 3cm



PLT2801 ~ GN Rectangle Platter ~  
~ Plat ~ Platte ~ Fuente ~ Piatto ~

D: 11" | W: 5.5" | H: 1"  
D: 28cm | W: 14cm | H: 3cm



XAP3701 ~ Oval Platter ~  
~ Plat ~ Platte ~ Fuente ~ Piatto ~

D: 14" | W: 9" | H: 1"  
D: 37cm | W: 32cm | H: 3cm



XAP4151 ~ Oval Platter ~  
~ Plat ~ Platte ~ Fuente ~ Piatto ~

D: 16" | W: 10" | H: 1.5"  
D: 42cm | W: 24cm | H: 4cm



PLT 3601 ~ GN Rectangle Platter ~  
~ Plat ~ Platte ~ Fuente ~ Piatto ~

D: 14" | W: 7" | H: 1"  
D: 36cm | W: 17cm | H: 3cm



REP2301 ~ Rect Platter Small ~  
~ Plat ~ Platte ~ Fuente ~ Piatto ~

D: 9" | W: 6" | H: 1"  
D: 23cm | W: 16cm | H: 2cm



REP2951 ~ Rect Platter Mid ~  
~ Plat ~ Platte ~ Fuente ~ Piatto ~

D: 12" | W: 7" | H: 1"  
D: 30cm | W: 19cm | H: 3cm



REP3201 ~ Rect Platter Big ~  
~ Plat ~ Platte ~ Fuente ~ Piatto ~

D: 13" | W: 8" | H: 1"  
D: 32cm | W: 21cm | H: 3cm





BMP2951 ~ Bamboo Platter Small ~  
~ Plat ~ Platte ~ Fuente ~ Piatto ~

D: 12" | W: 5" | H: 1"  
D: 30cm | W: 12cm | H: 2cm



BMP3451 ~ Bamboo Platter Big ~  
~ Plat ~ Platte ~ Fuente ~ Piatto ~

D: 13" | W: 6" | H: 1"  
D: 35cm | W: 15cm | H: 3cm



XAP2502 ~ Vital Rectangle ~  
~ Plat ~ Platte ~ Fuente ~ Piatto ~

D: 10" | W: 8" | H: 1"  
D: 25cm | W: 21cm | H: 3cm



OBP2351 ~ Oblate Platter Small ~  
~ Plat ~ Platte ~ Fuente ~ Piatto ~

D: 9" | W: 4" | H: 1"  
D: 24cm | W: 11cm | H: 2cm



OBP2901 ~ Oblate Platter Med ~  
~ Plat ~ Platte ~ Fuente ~ Piatto ~

D: 11" | W: 5" | H: 1"  
D: 29cm | W: 14cm | H: 2cm



OBP3251 ~ Oblate Platter large ~  
~ Plat ~ Platte ~ Fuente ~ Piatto ~

D: 13" | W: 6" | H: 1"  
D: 33cm | W: 16cm | H: 2cm



WAP2551 ~ Wave Platter Small ~  
~ Plat ~ Platte ~ Fuente ~ Piatto ~

D: 10" | W: 6" | H: 1"  
D: 26cm | W: 16cm | H: 2cm



WAP3051 ~ Wave Platter Big ~  
~ Plat ~ Platte ~ Fuente ~ Piatto ~

D: 12" | W: 7" | H: 1"  
D: 31cm | W: 18cm | H: 2cm



XAA1151 ~ Pie Dish ~

D: 4.5" | W: 10" | H: 2"  
D: 12cm | W: 26cm | H: 5cm



XAA0601 ~ Flower vase ~  
~ Vase ~ Vase ~ Florero ~ Vaso di fiori ~

---

CAP: 770ml / 27 oz  
D: 2" | W: 3" | H: 11"  
D: 6cm | W: 8cm | H: 28cm



XAA0402 ~ Flower vase ~  
~ Vase ~ Vase ~ Florero ~  
~ Vaso di fiori ~

---

CAP: 330ml / 12 oz  
D: 2" | W: 2" | H: 8"  
D: 4cm | W: 6cm | H: 21cm



XAA0201 ~ Bud Vase ~

---

CAP: 140ml / 5 oz  
D: 1" | W: 3" | H: 6"  
D: 2cm | W: 7cm | H: 14cm



XAA1701 ~ Trinket Tray ~

---

D: 8" | W: 7" | H: 1"  
D: 21cm | W: 17cm | H: 3cm



XAP2051 ~ Square Plate ~

---

D: 10" | W: 10" | H: 1"  
D: 24cm | W: 24cm | H: 3cm



XAA0951 ~ Spoon rest ~

---

D: 4" | W: 8" | H: 1"  
D: 10cm | W: 21cm | H: 3cm



XAA0955 ~ Gourmet Egg-cup ~

---

D: 4" | W: 4" | H: 5"  
D: 10cm | W: 10cm | H: 12cm



XAA0502 ~ Egg cup ~  
~ Coquetier ~ Eierbecher ~ Huevera ~  
Portauovo ~

---

D: 2" | W: 2" | H: 3"  
D: 5cm | W: 5cm | H: 7cm



XAA1601 ~ Egg Plate ~

---

D: 9" | W: 6" | H: 1"  
D: 24cm | W: 16cm | H: 2cm



# CUSTOMISATION

We have a range of possibilities to customise your tableware as per your likings.







## D'or



Single Gold Line

## D'or Luxe



Double Gold Line

## D' Platine



Single Platinum Line

## Black

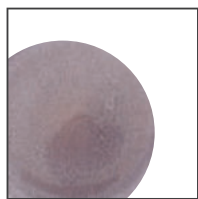


Single Black Line

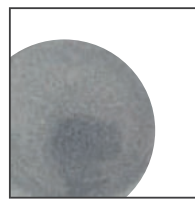
## Reactive Glazes



Blue White



Brown Pink



White Grey



White Green

## Black



Matte



Glossy



# DESIGNED TO LAST

## CARE AND HANDLING INSTRUCTIONS



All Lazzaro Fine Bone China products are made with the utmost care and respect ensuring that they pass from our hands to yours safely. We are confident in the outstanding quality of our products which are durable and designed to weather some of the busiest kitchens around the world.

As with all good quality products there are some essential care instructions, and these are our recommendations when handling all our products.



Our fine bone china products are dishwasher safe but they still need to be loaded into racks with care and attention. Heavier items should be stacked ascending to lighter items for stacking success. Some products should not be stacked like mugs, nesting items.

## GENERAL CARE INSTRUCTIONS

---

- Our fine bone china products are dishwasher safe.
- 70% of damage/loss occurs at the dishwasher table.
- Ensure dishwasher table has sufficient space to store dirty items.
- All washing equipment should be maintained and checked regularly.
- Check stock regularly.
- Storage facilities should allow for stock rotation to prevent overuse.
- All items should be separated into type prior to washing.
- Avoid overloading trays or trolleys.
- Because of regional variation in the quality of water, make sure sufficient decalcifying agent is used.
- Take care when arranging the items in the dishwasher, chips and cracks occur often at this stage.
- Observe the manufacturer's advice on wash time and quantity of detergent.
- Large solid objects should be washed by hand.
- Open the dishwasher once the wash cycle is over to allow the steam to escape and prevent condensation from forming.





# Compliant with international standards



## BRITISH BS5416 & EUROPEAN BSEN1900

### FINE BONE CHINA CARE AND HANDLING

---

- Should be washed within 45 minutes of removal from the table and pre-rinsed.
- Avoid contact between china, dinnerware and metals.
- Abrasive cleaning aids should not be used, i.e. scouring pads, steel wool, etc.
- Minimize handling to reduce glaze abrasion.
- Do not stack more than 15" high.
- In order to reduce abrasions, do not slide items across each other.
- Be sure to rotate your stock to prevent uneven wear.
- Only stack product that are designated stackable OR another example.
- Our products are lavish and intricate and often incorporate amounts of gold or platinum as well as rich based colours. To ensure your purchase gives a trouble-free service we recommend you follow our simple guidelines:
- Tableware of premium quality should not be used for cooking purposes.
- Please do not use a metallic implement to remove left over food from plates.
- Always collect cutlery and tableware separately after dining, never stack used plates with cutlery still in place.
- Exercise care when loading the dishwasher to avoid impact damage
- Tableware should be correctly stacked inside the dishwasher, taking care to prevent direct contact with other items
- Never mix tableware with stainless steel items in the dishwasher
- The dishwasher should be a reputable brand made by a recognised manufacturer. The guidelines issued by the manufacturer should always be followed.
- Ensure that the dishwasher is serviced regularly, according to the manufacturer's recommendations.

LAZZARÒ

[www.lazzaro.in](http://www.lazzaro.in) | [info@lazzaro.in](mailto:info@lazzaro.in)

+91 99982 56438 | +91 85111 21914